

creative *welcoming* *smart*

sustainable *progressive* *welcoming* *stylish*
socially minded *eclectic* *meeting place*

energetic *inclusive*

local Nature. Humanity. Connections.

Artwork sets the stage. Visitors and residents are the people in this space while the artwork creates a scene. A different theme for each level speaks of nature—our local habitat. A careful balance of solid color and artistic murals, give clues to each theme, create energy and express exuberance, while avoiding visual chaos. Nothing in this space is arbitrary. On every floor there is a “dot” to stand on for an ideal view to take it in and reveal something in the environment (find the dot/connect the dot). There is a photo op and engaging physical sculpture on every level.

tight knit *vibrant*

family *grass roots*

interactive *dramatic* *powerful on all levels* *think big*

front porch *open minded* *treasures to find*

organic *free*

transparent “etched” vinyl applied to exterior glass identifies “The dot” in an unexpected way

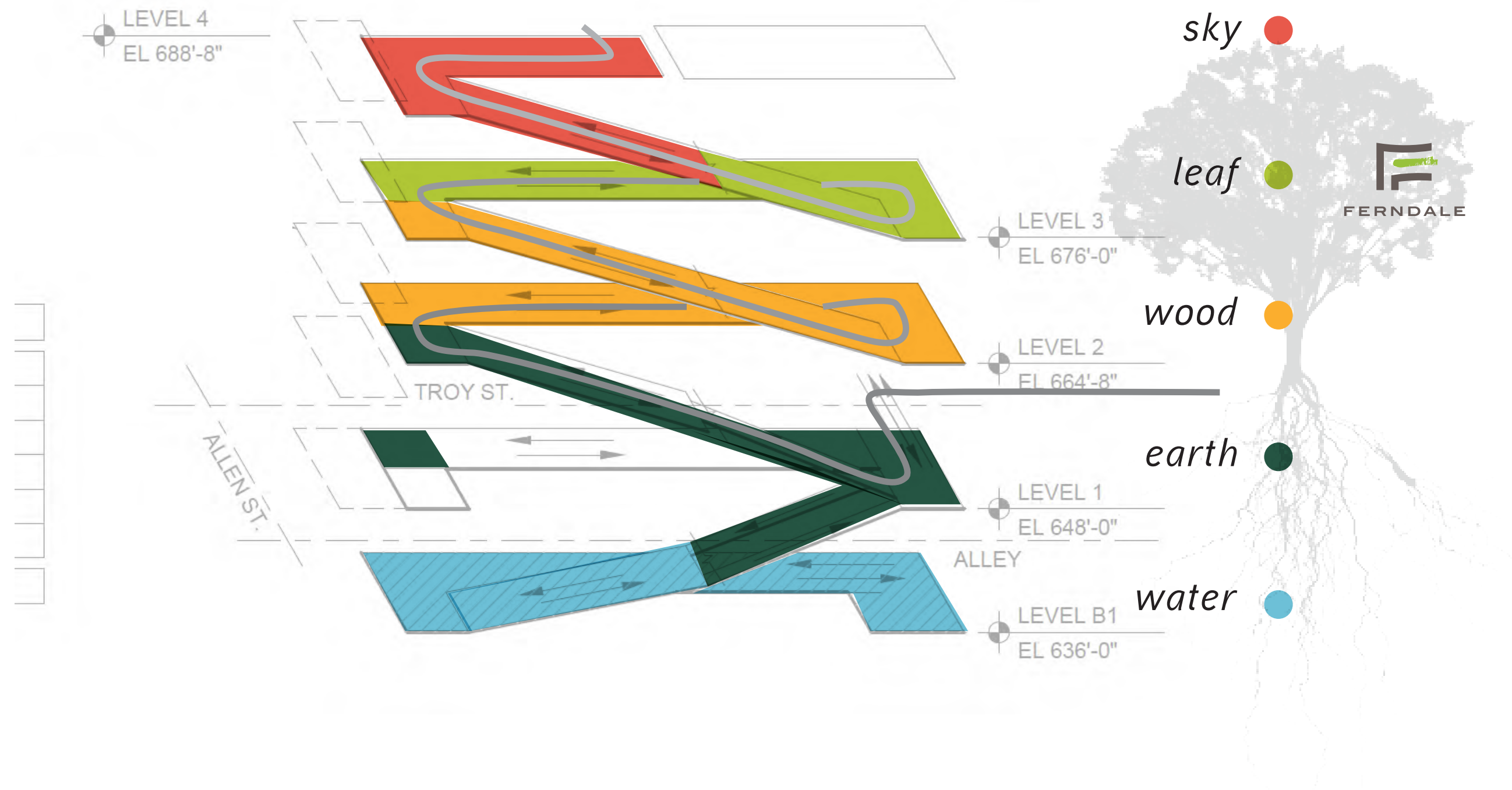
rotating sculptural element engages visitors and suggests color themes used inside structure

painted illuminated cabinet sign with push through acrylic integrated with digital sign (mounted to architectural fin)

painted mural on block, visable from pedestrian and vehicle perspectives



Vibrant, Artistic, Memorable
Clearly identifies entrance and integrates with architecture.

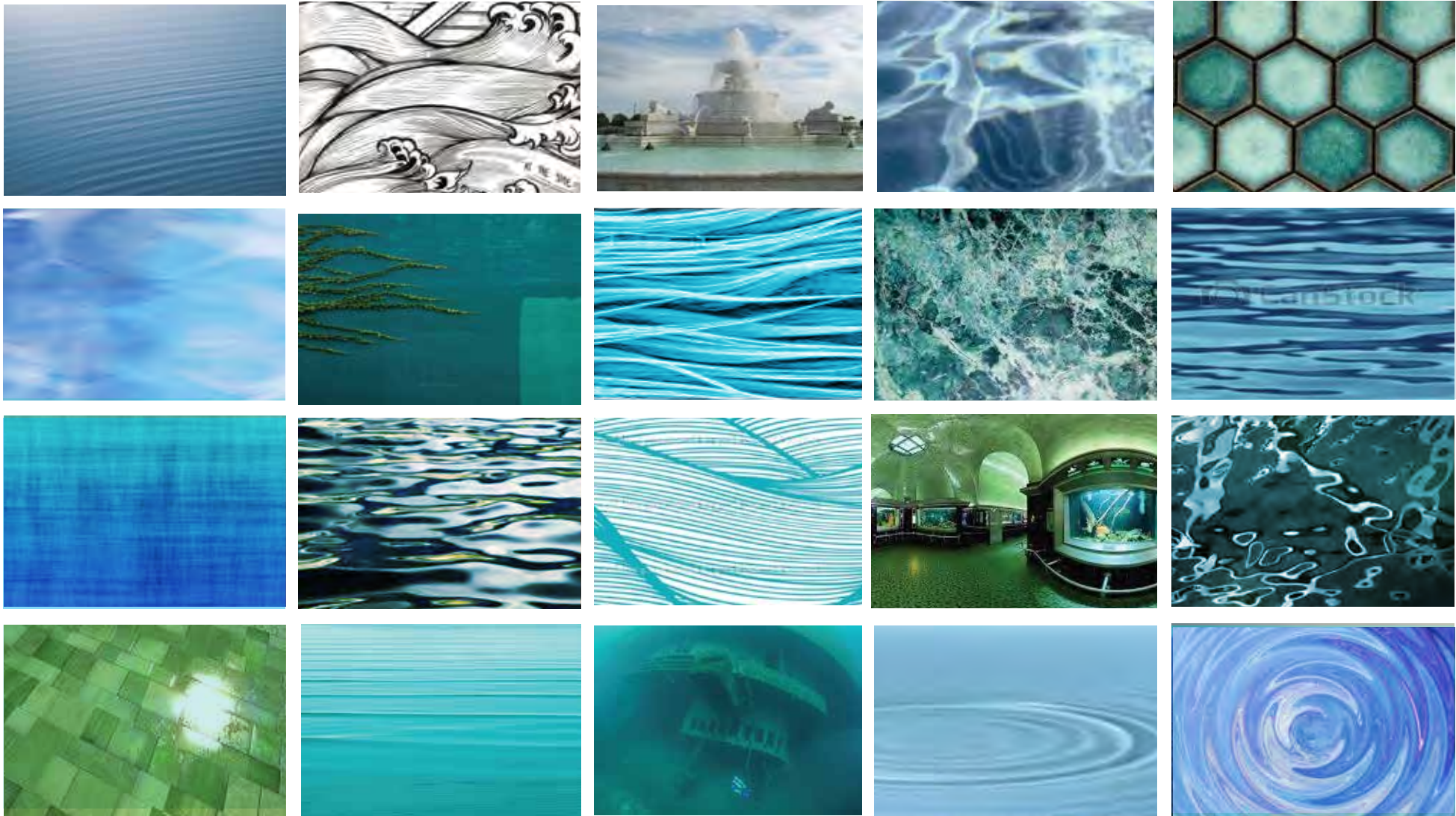


theme.

murals.

approach.

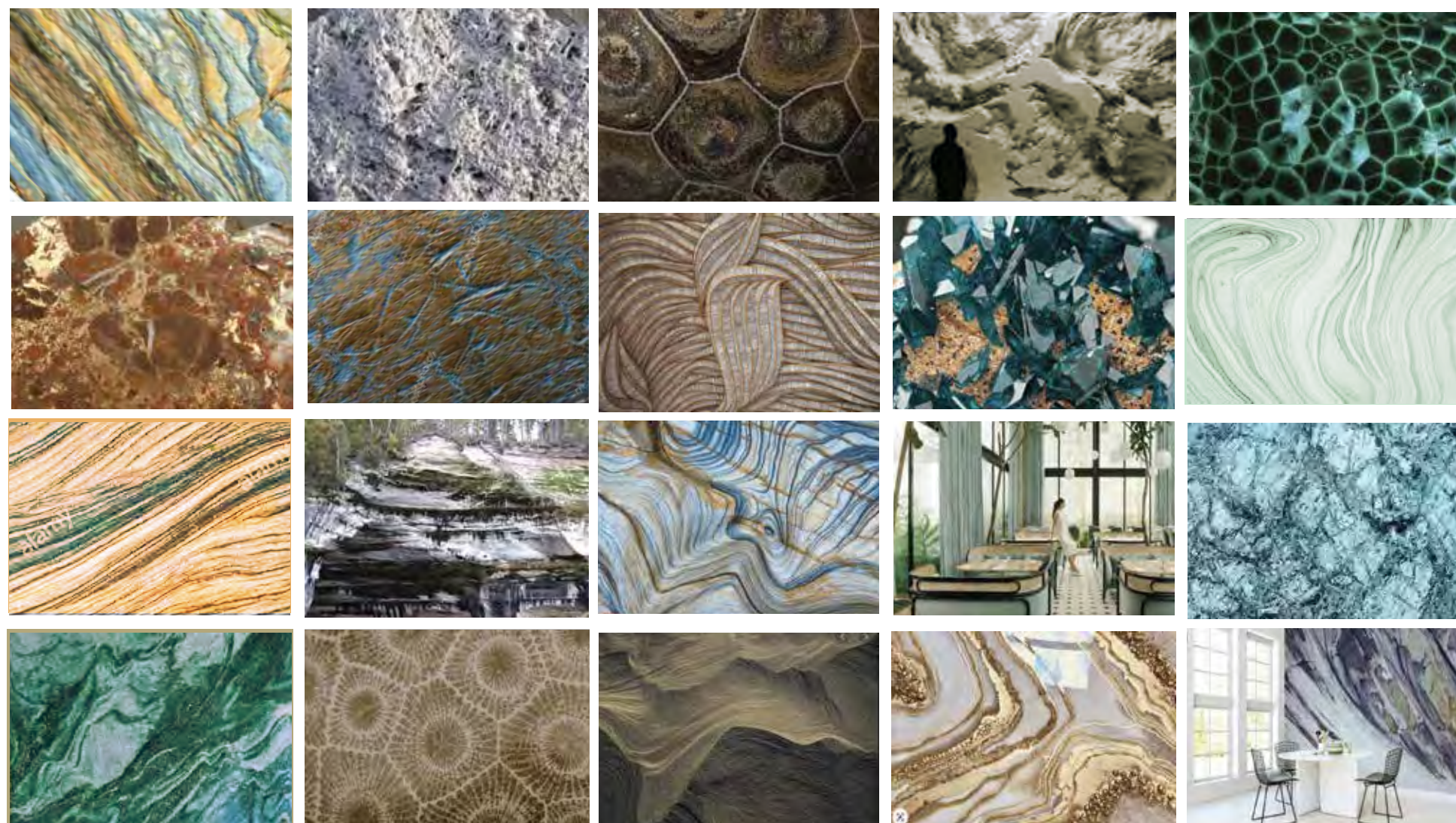
items.



linear, smooth, cool, great lakes,
belle isle aquarium

calm, shifting, horizontal

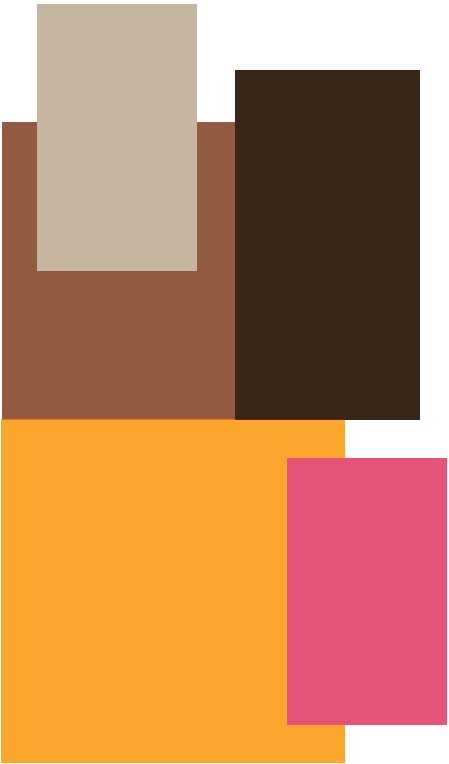
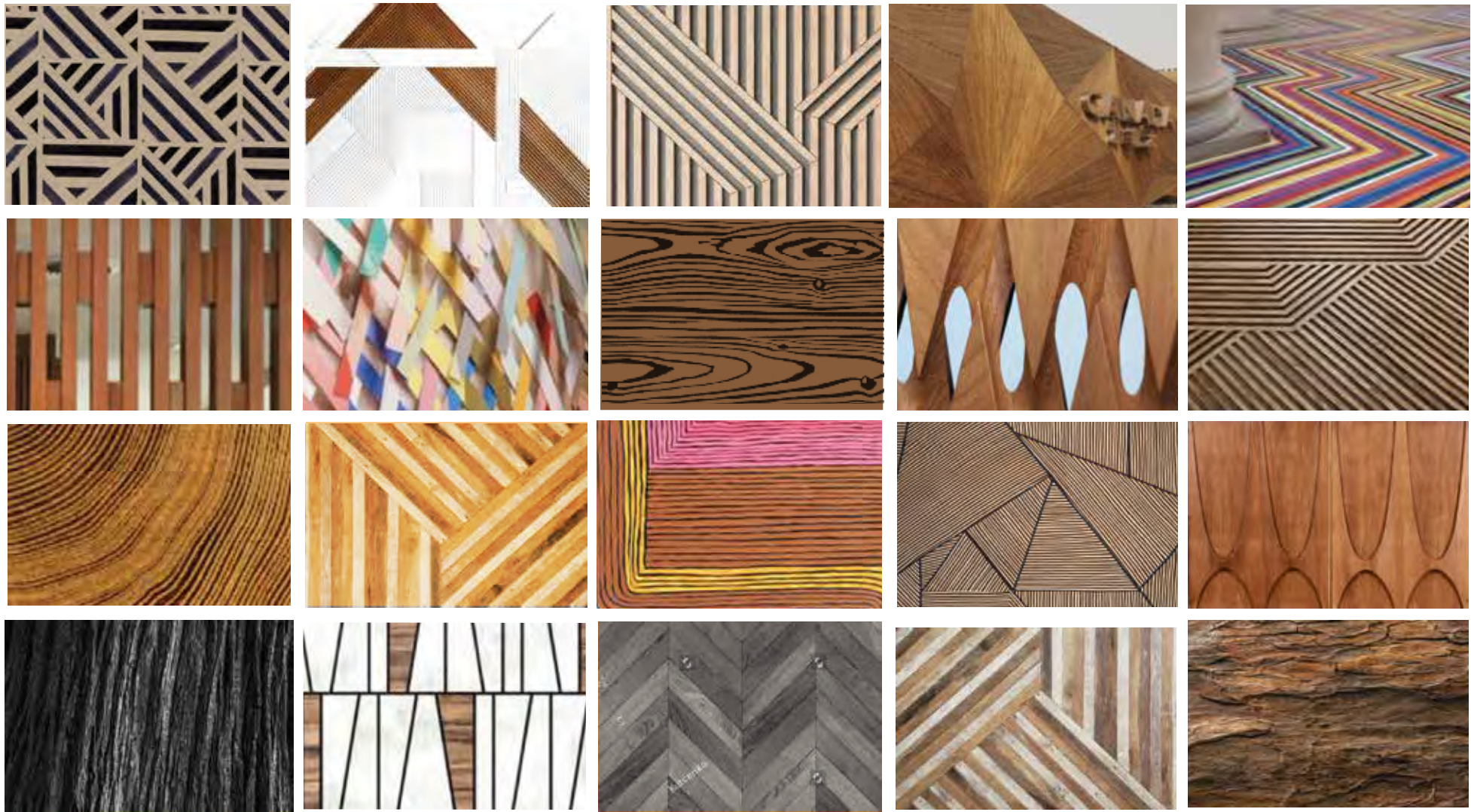
water



*mineral, strata, earth,
topographic surface,
pictured rocks, copper mines*

*swirl, change direction,
circulate*

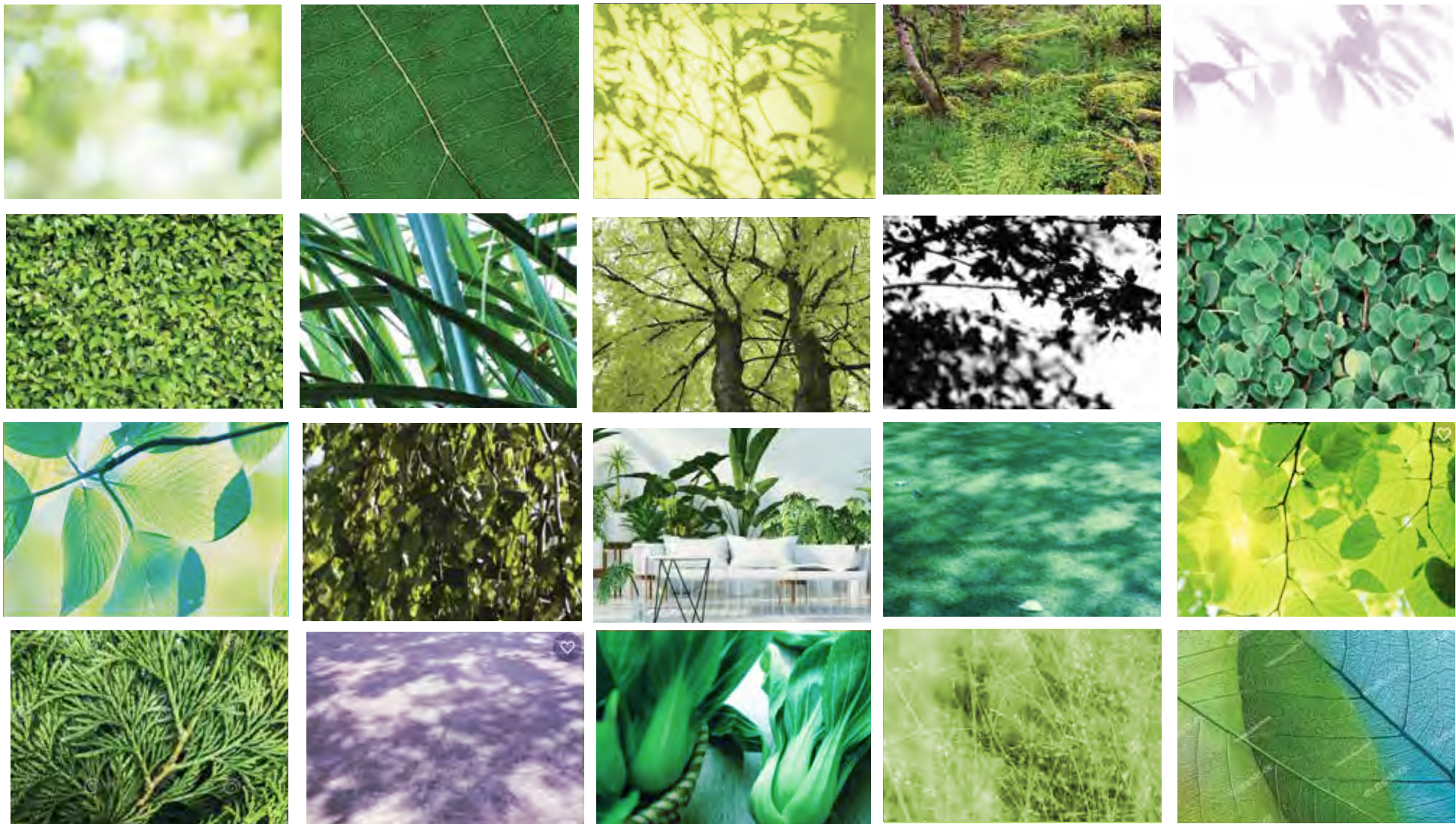
rock



*solid, systematic, sound,
orderly, structured, warm*

*repetitive, geometric,
incremental*

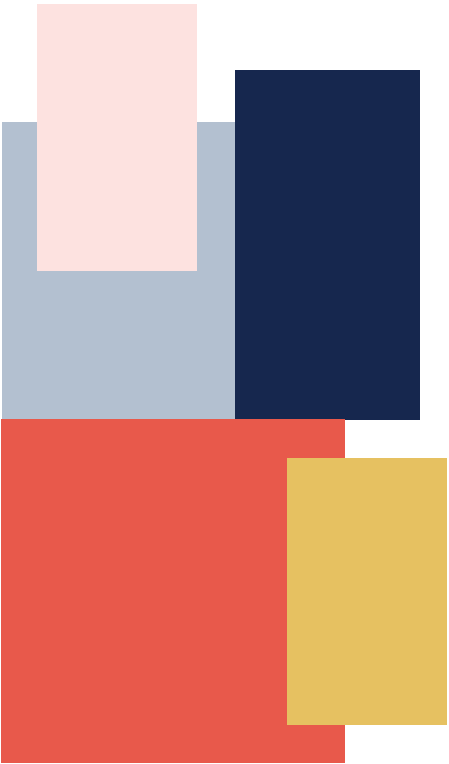
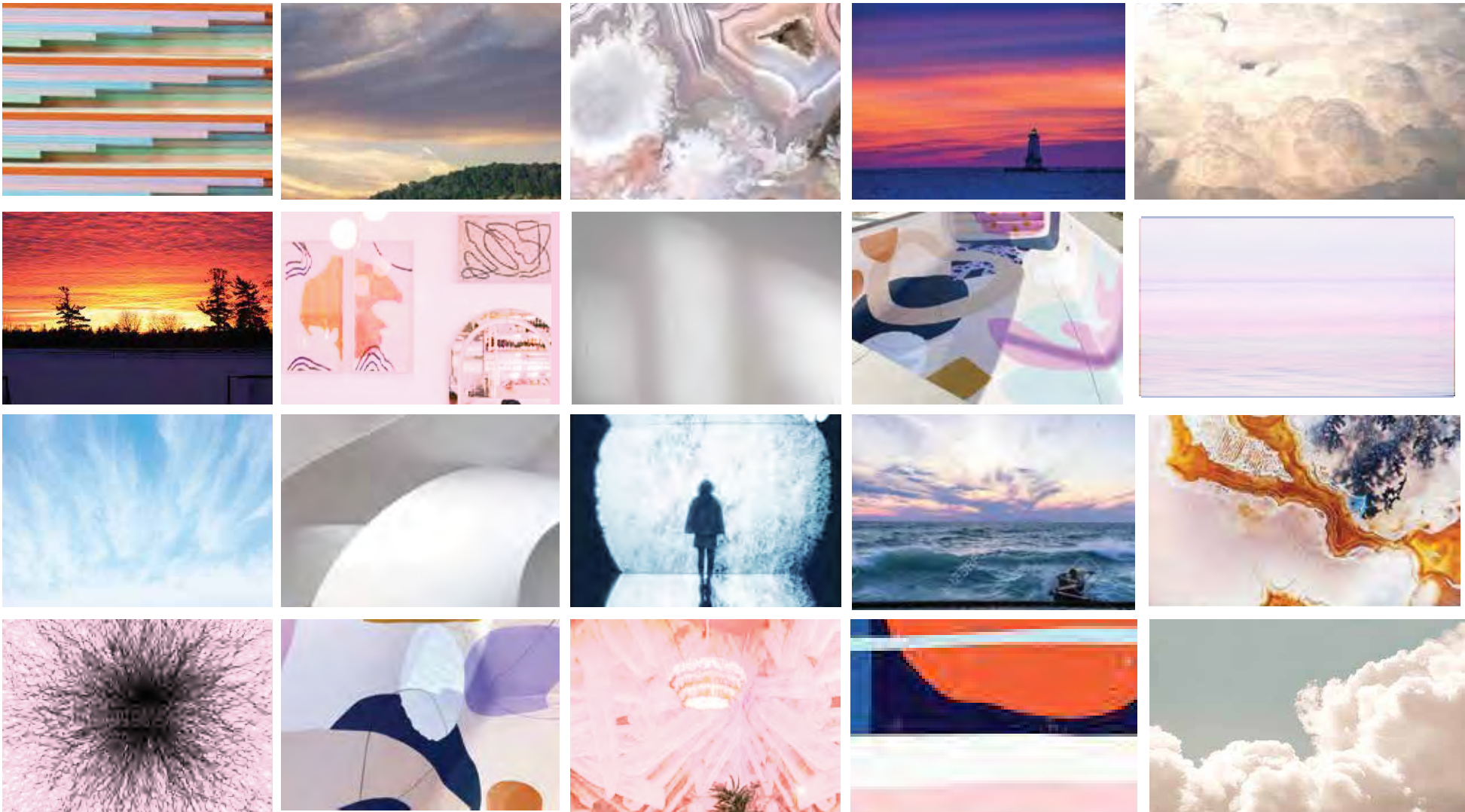
wood



*lush, dappled, speckled,
irregular, vibrant, pleasant*

*flutter, dance, shift
vary,*

leaf



roof, open, airy, sky,
light, pink cloud, sunset

billow, breezy, loose,
free

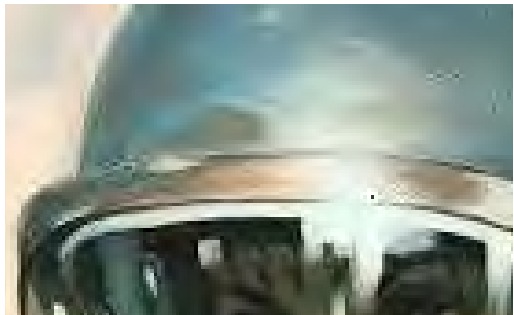
sky

theme.

murals.

approach.

items.



*painterly technique
for water theme.*



*collaborator and muralist
large scale and graphic*

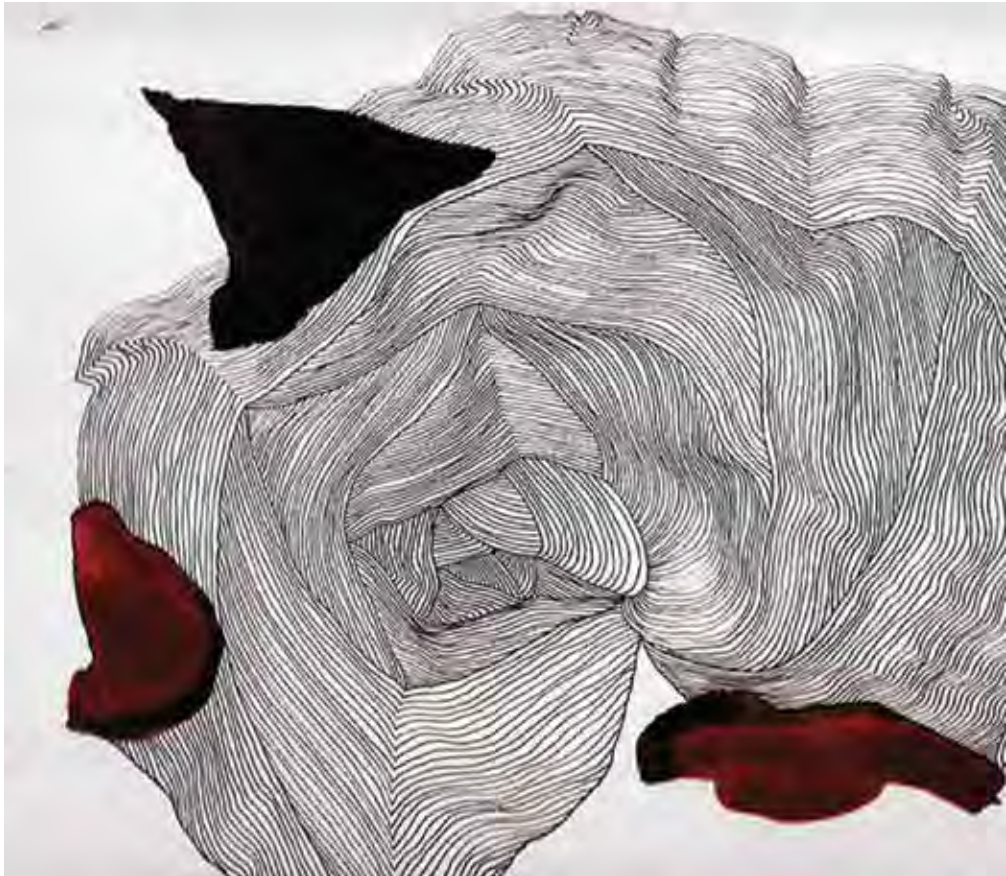


Tony Rave
Artist / Muralist
Detroit



Glenn Barr
Artist / Muralist
Ferndale Resident

water



*line quality and forms
for earth theme.*



Mike Ross
Artist
333 Midland Studios - Highland Park

rock



*geometric forms
for wood theme.*

Joey Salamon
Artist / Muralist



*graphic sensibility
pattern exploration*

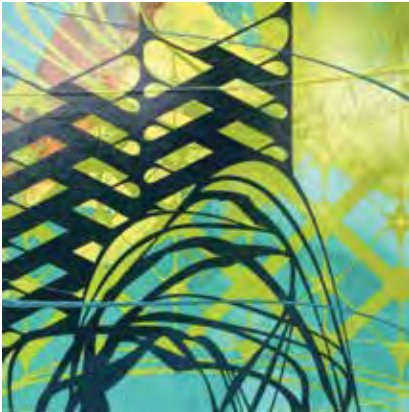


Desiree Kelly
*Graphic Designer / Artist / Muralist
Detroit*



wood

air



*organic natural forms
for leaf theme*



Matt Eaton
Artist / Curator



*large scale experience
and graphic forms*



Phil Simpson
*Artist / Muralist
Detroit, MI*

leaf

large scale experience
color and lightness of
compositions for sky theme



Ellen Rutt
Painter / Muralist
University of Michigan



color and lightness of
compositions for sky theme



Lisa Goedert
Illustrator
Hamtramck, Michigan

sky

theme.

murals.

approach.

items.

Ceiling, walls and floors and pipe can be considered canvas for paint



themed public art murals by local artists painted on columns, or walls of lower levels.



Sections of unpainted concrete can become a design element



paint sections of ceiling and columns
some finished block or concrete remain unpainted

air

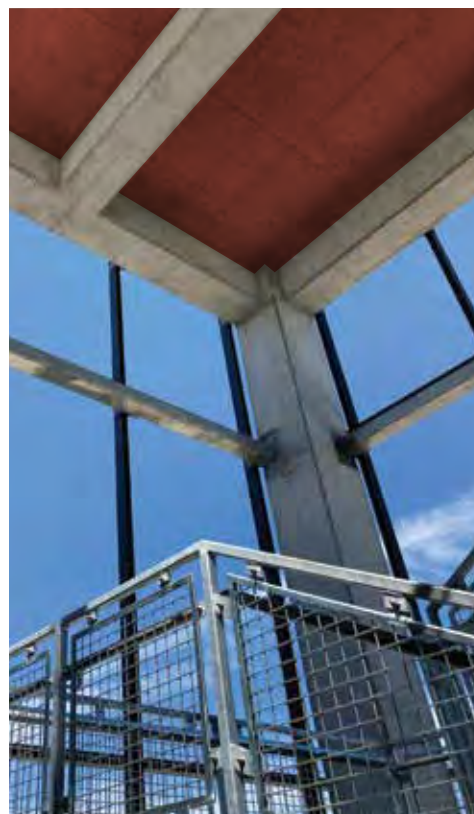
RENDERING / MURALS AND PAINT



Design Thinking:

*Balance complexity and simplicity.
Use concrete to "frame" murals and
blocks of color on ceiling.*

*Use concrete as transition from color
to color and to distinguish artists.*



Parameters:

- Artists may decide to extend elements of their artwork onto floor or adjacent walls
- Murals may leave open areas (unpainted) within their murals, using concrete as a color.
- Basement and Level 1 murals occur on walls, leaving the columns plain.
- Levels 2-4 have fewer wall surfaces, so murals occur on columns.
- No murals on South interior columns, placing focus on North side of building not the residential side.

theme.

murals.

approach.

items.

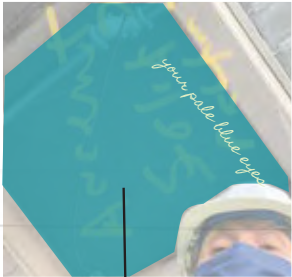
30" high 1" thick fabricated metal letter painted custom color, mounted to block at mortar.



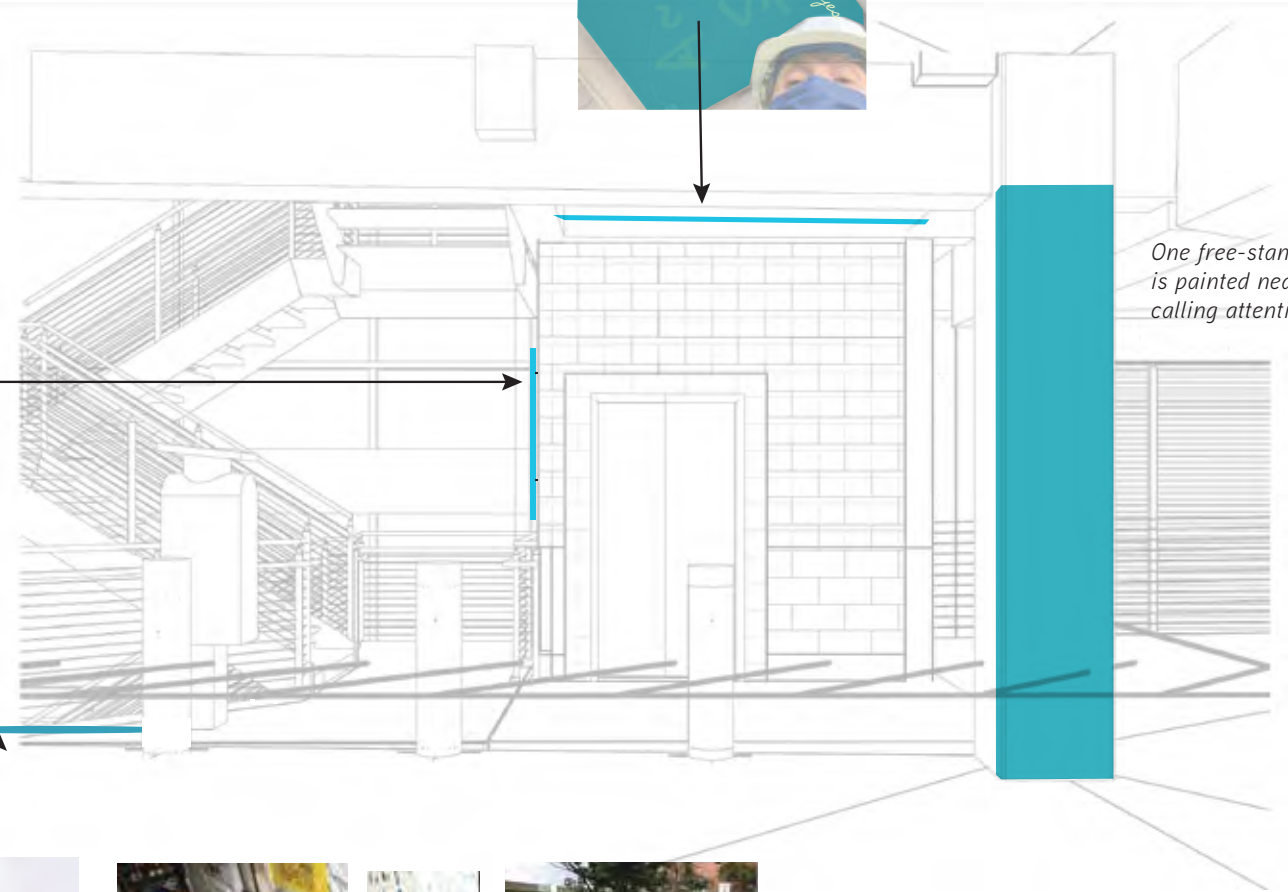
Level 1 only (floor at East and West entrance) 25" color wheel design terrazzo inlay into concrete.



Detroit artist **Herbert Massey**. An example of multicolor terrazzo material. An example an outdoor terrazzo installation.

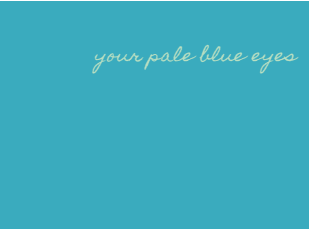
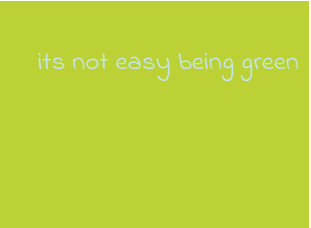


Ceiling at elevator painted theme color. Unexpected messaging painted on ceiling visible while waiting for elevator, useful for "selfie" background.

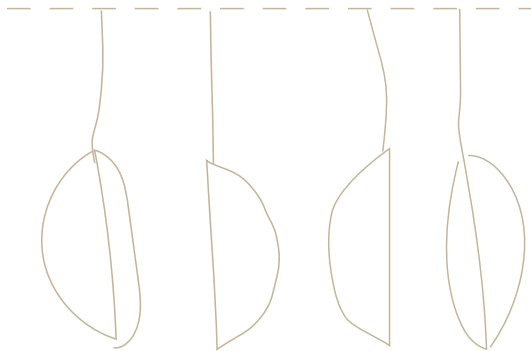
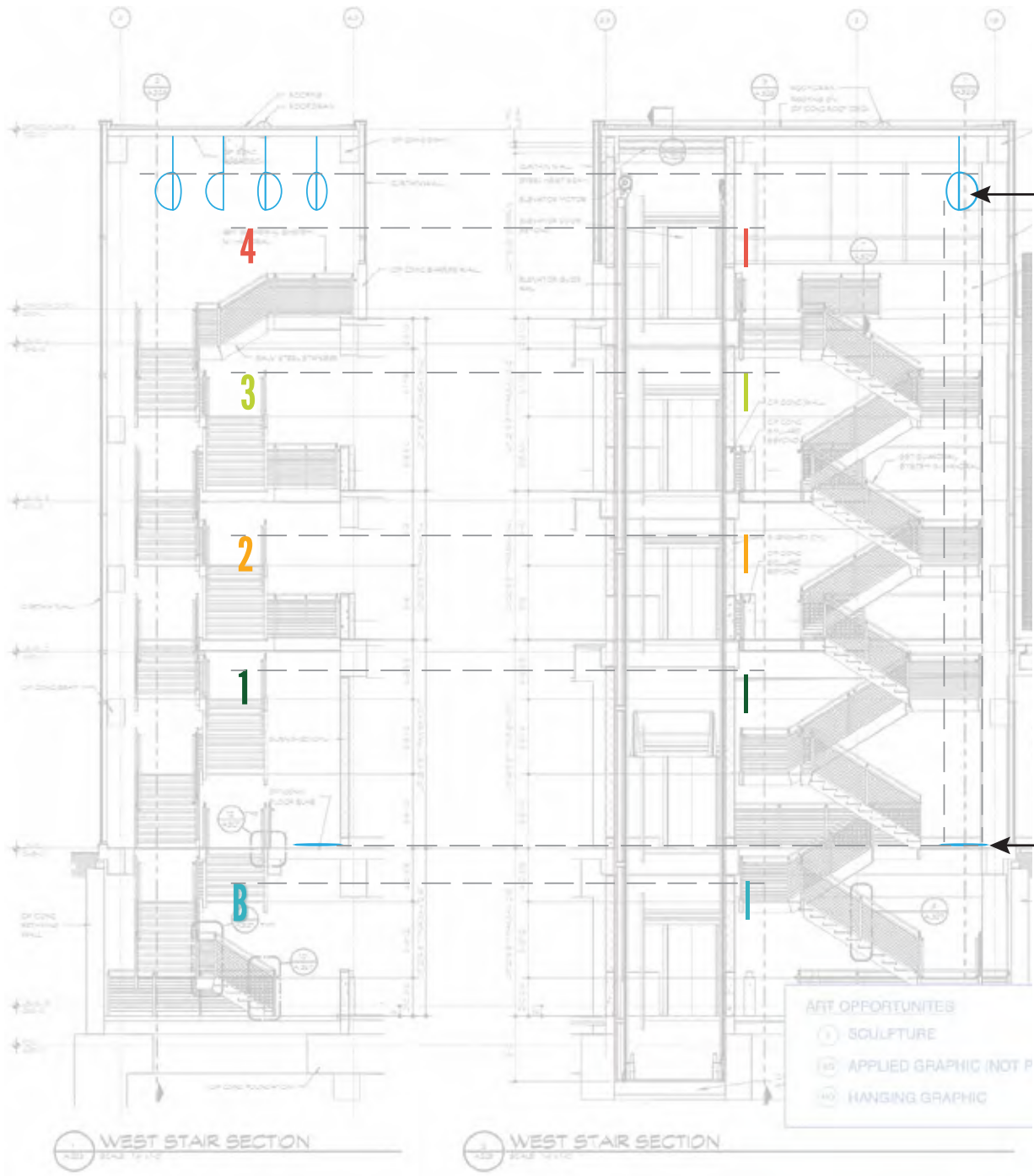


One free-standing column is painted near each stairwell calling attention to exits.

Community survey to make song lyric selections to appear near elevator. Song lyrics respond to the color and/or theme of each level and represent diverse musicians and styles.



STAIRWELL HANGING SCULPTURE



Folded dot shape is less literal than flat circle but is an extension of a "dot". Angled form plays with shadow and light in stairwell.

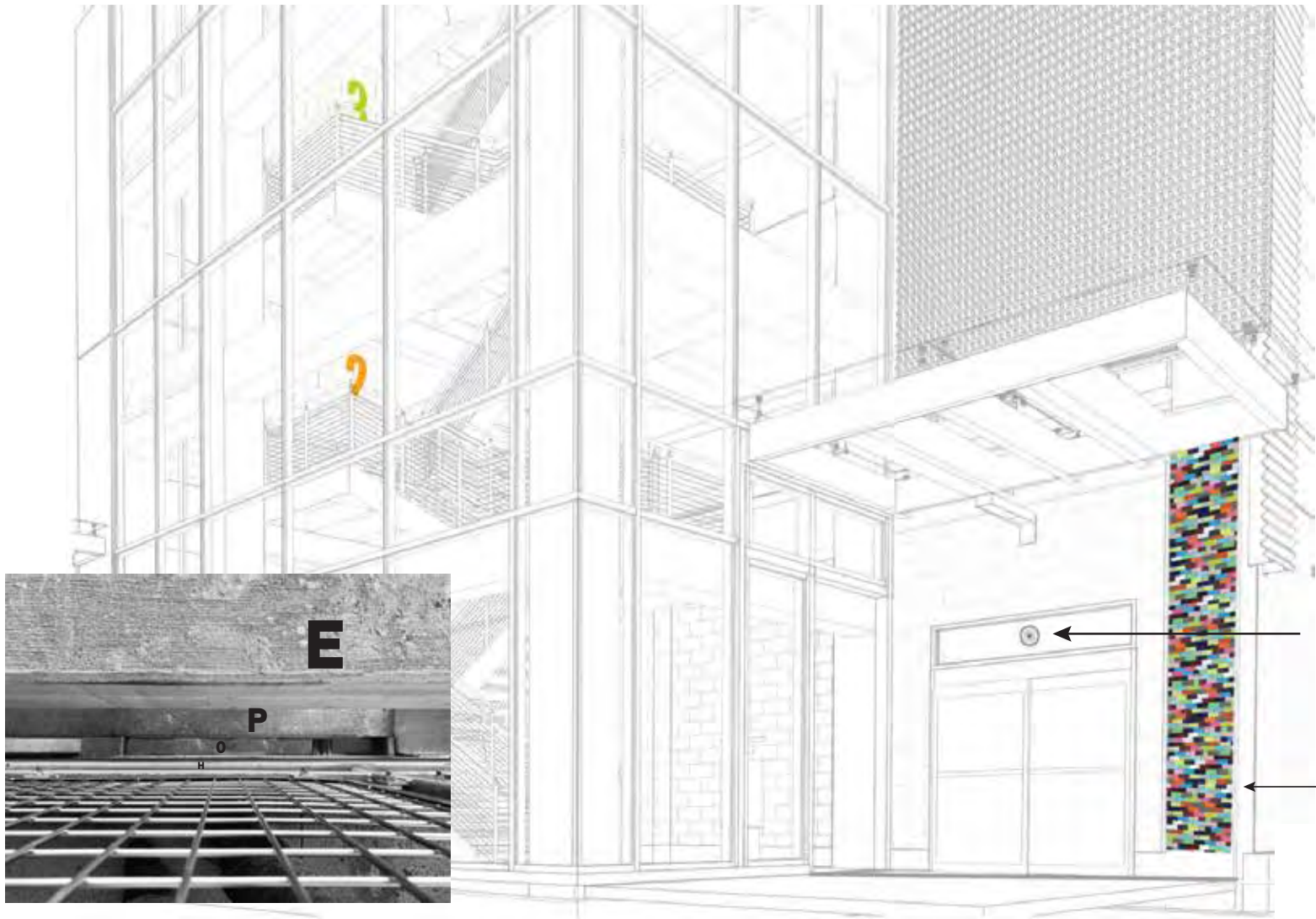
The shape appears different from ground level or upperlevels. Resembles leaf or phases of the moon.

Large, simple shapes contrast complex and detailed, galvanized stair and railings.

Forms are multi-color and movable indicating playfulness and change. Color palette compliments with interior artwork.



Fiber and metal cable are in keeping with natural materials. Architectural felt is natural, durable and suitable for commercial and semi-enclosed structures.



painted letters create a typographic puzzle in stairwell, seen when looking down from upper levels. (individual letters spell HOPE at west stairwell and LOVE at east stairwell.

Bicycle wheel graphic vinyl on glass 10" x 10"



Glass tiles applied to concrete section of exterior structure. Approx 15' x 4'



Carlos Nielbock
Metal Work Artist

Phone-charging sculpture at public space near west entrance.

Detroit Windmill is an innovative and patent pending, fully self sustaining, low level wind turbine and micro-grid, it's the future of fully upcycled, energy generating, public art. Invented and fabricated in Detroit.

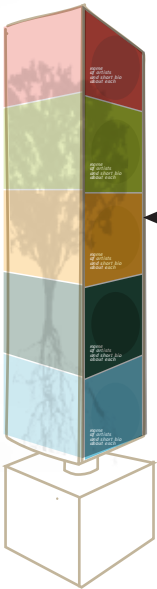
<https://detroitwindmill.com/>



Carey Gustfson
Glass Artist - Ferndale, Oak Park



Location for City of Ferndale plaque. first level..



Inspiration for color blocking, reflective surfaces and vertical tower sculpture with rotating cubes.

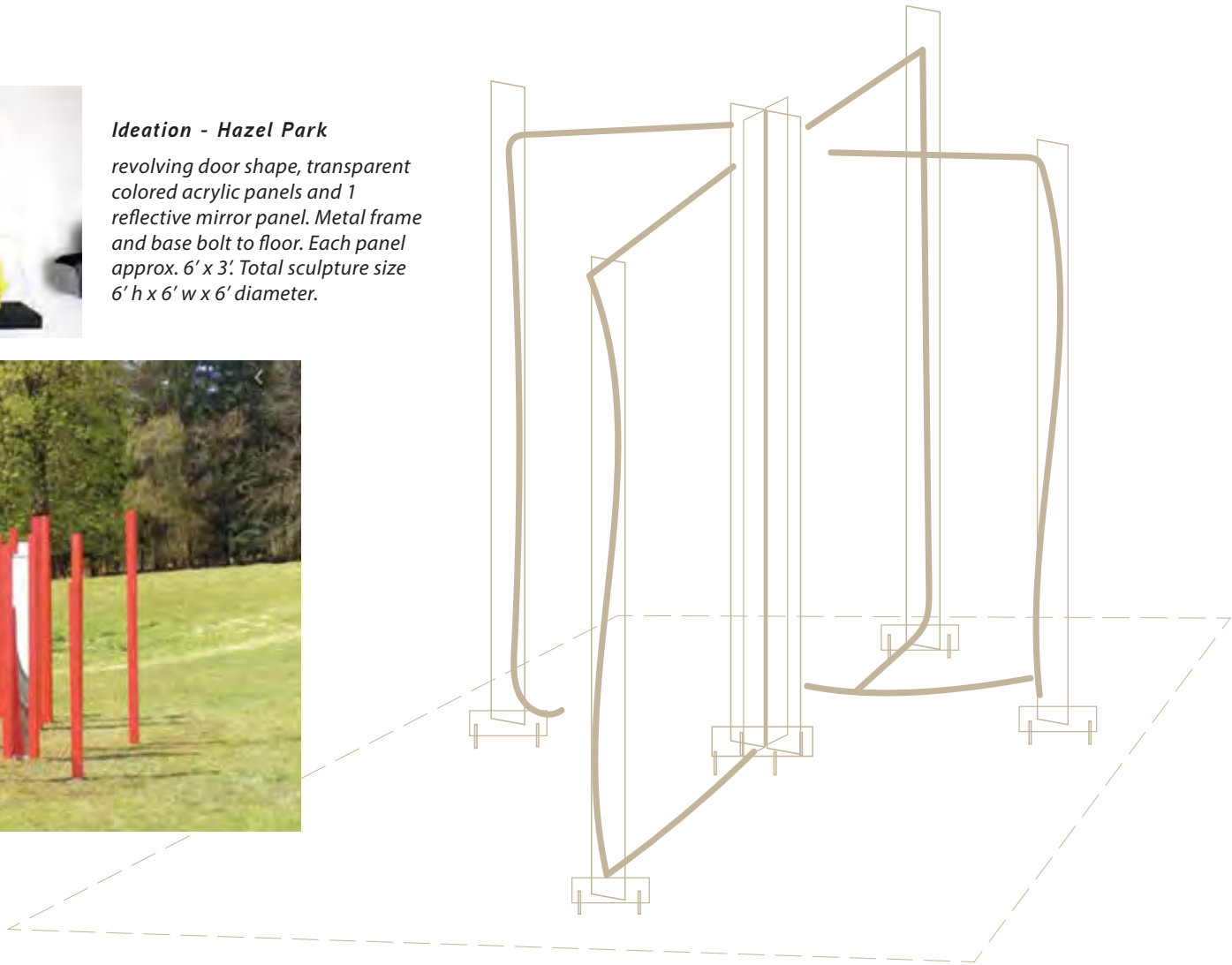
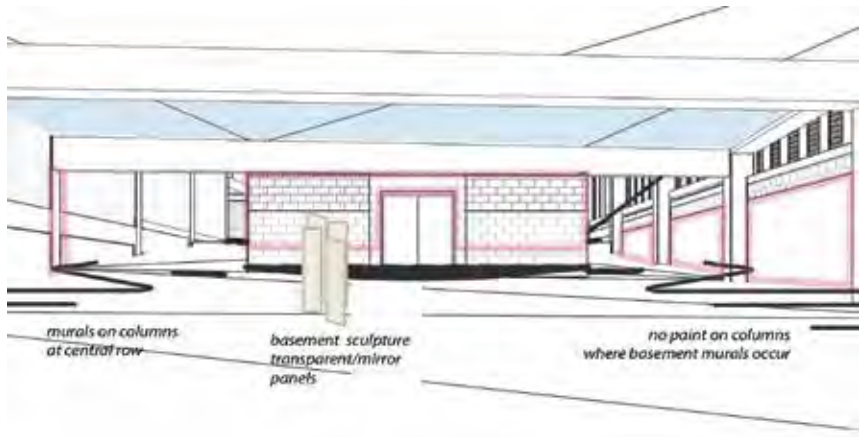


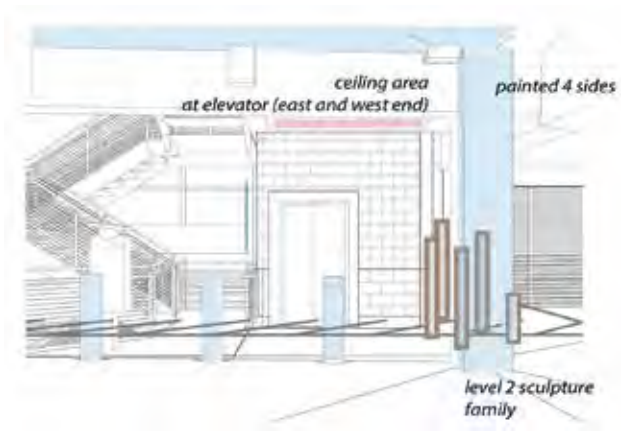
5' tall infographic introduces the themes, color and local artists who's work appears inside the structure.

Poured concrete base, rotating fabricated metal tower with multi color design and sections of reflective surfaces (mirror).



Ideation - Hazel Park
revolving door shape, transparent colored acrylic panels and 1 reflective mirror panel. Metal frame and base bolt to floor. Each panel approx. 6' x 3'. Total sculpture size 6' h x 6' w x 6' diameter.

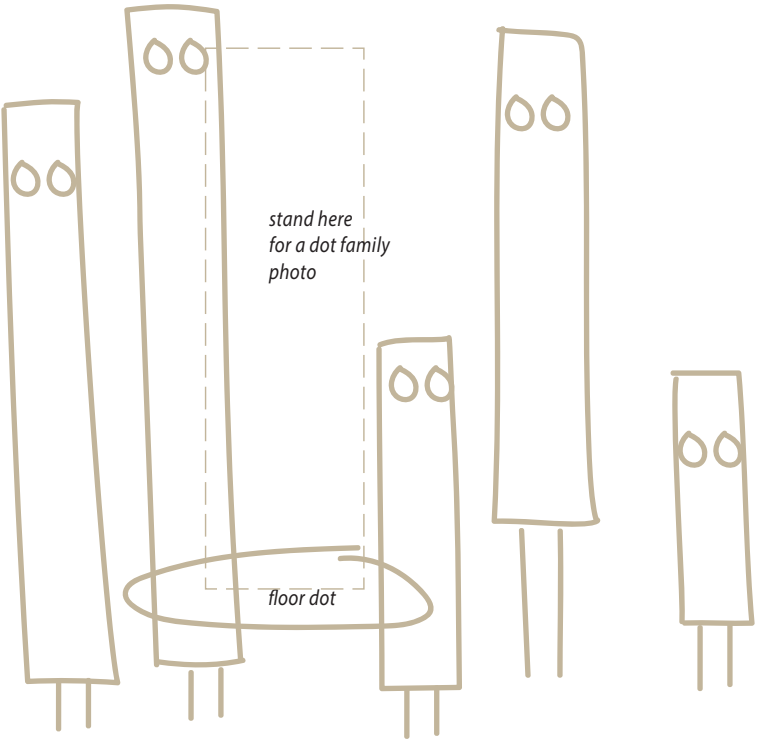




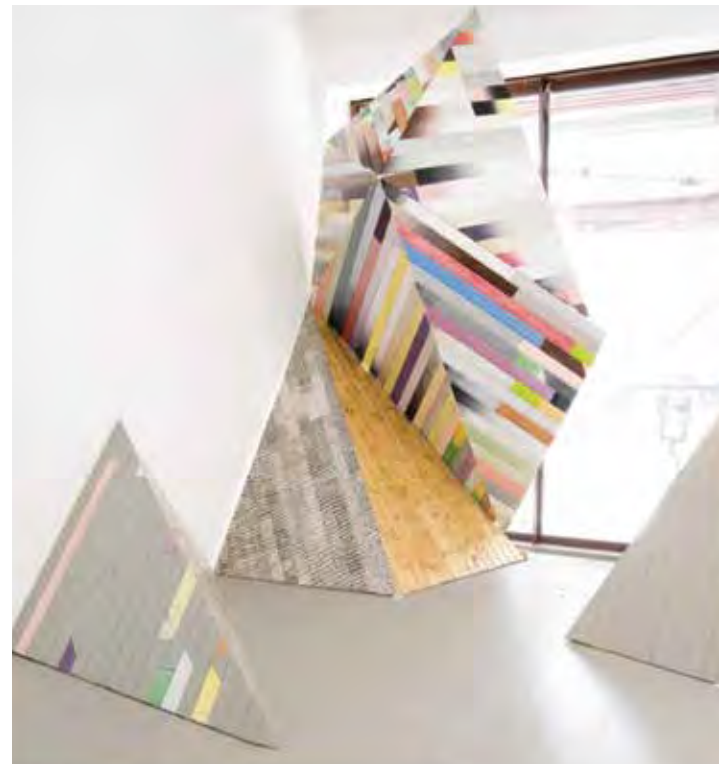
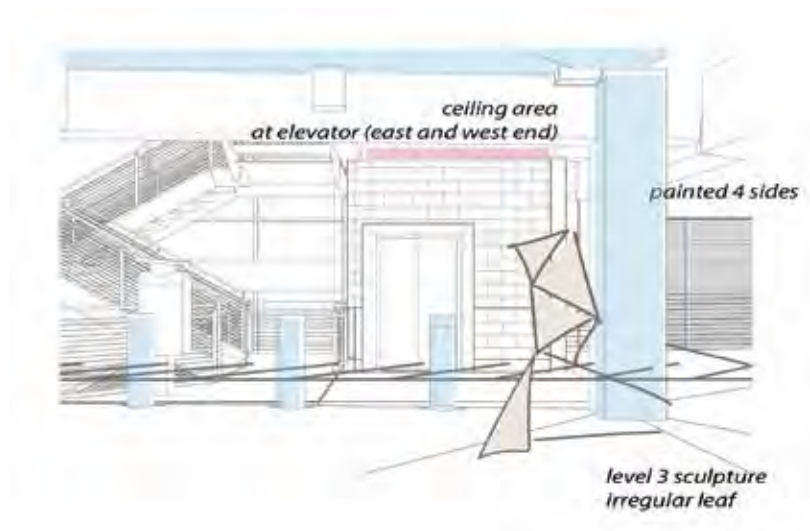
Ideation - Hazel Park

A multi-color family of painted square tube structures. Visitors may peer through holes, or stand independently on floor dot for a "family" photo.

Five 4" x 4" square tubes, vary in height from 36 inches to 6 ft. with 1" openings for eyes, both sides (to see through from back of each tube)

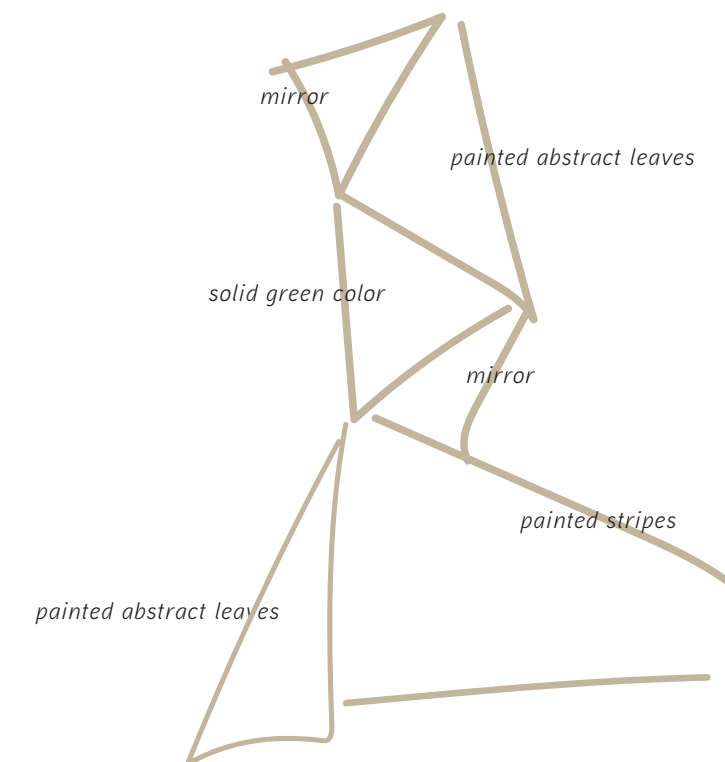


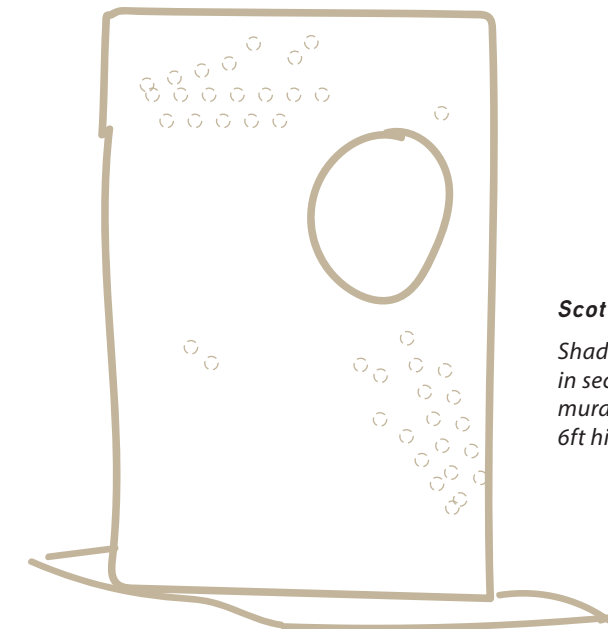
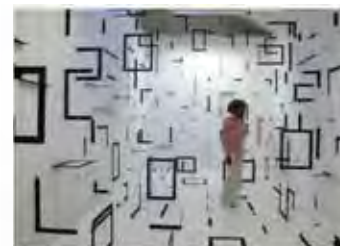
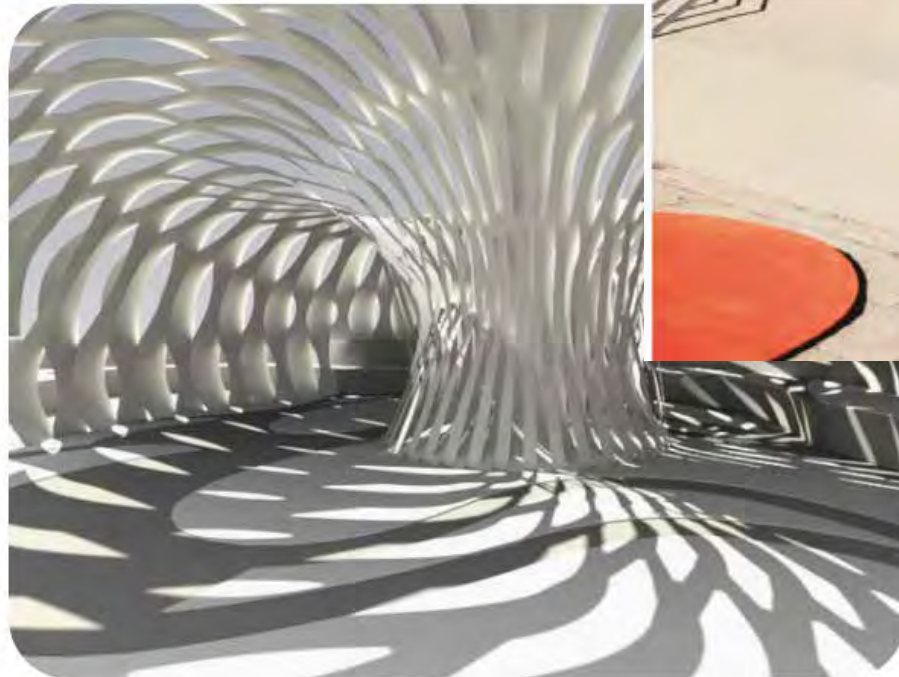
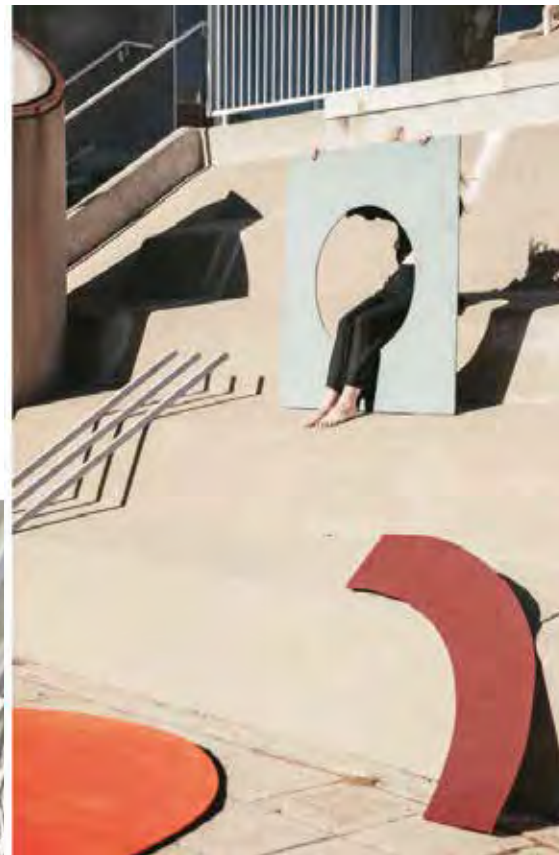
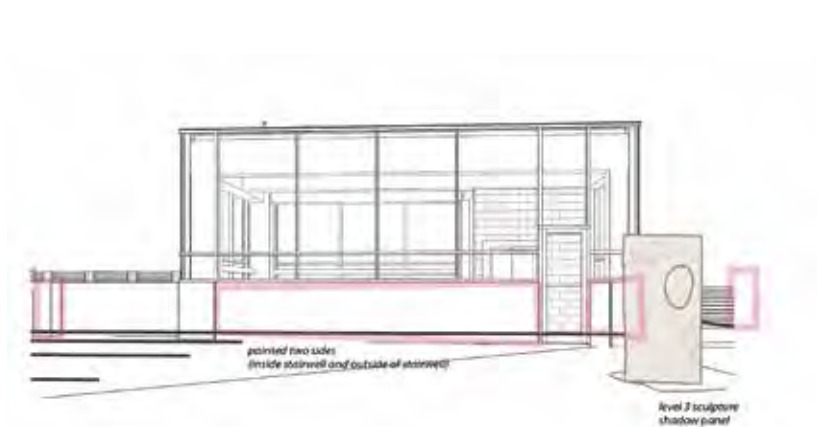
SCULPTURE - LEVEL 3



Scott Berels - Detroit

One irregular shape structure with 2 or 3 reflective surfaces, reflecting ceiling color and or sky (outside gap in structure wall). Metal structure with painted metal panels applied. Can be built in sections with installation on site. Forms imply leaf forms. Overall height 5'.

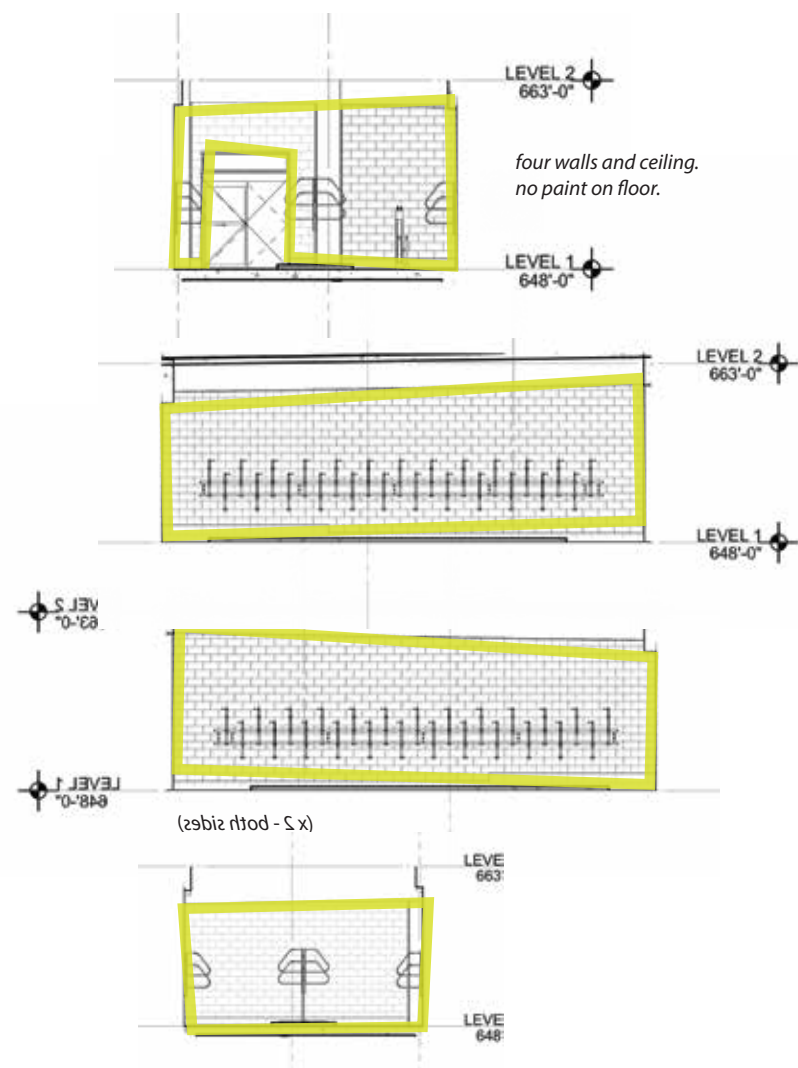




Scott Berels - Detroit

Shadow light panel, perforated in sections, geometric, compliments muralist and uses outdoor environment 6ft high.





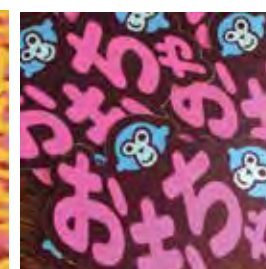
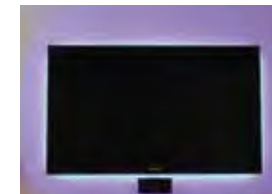
Jessel Kassel
Muralist - Metro Detroit



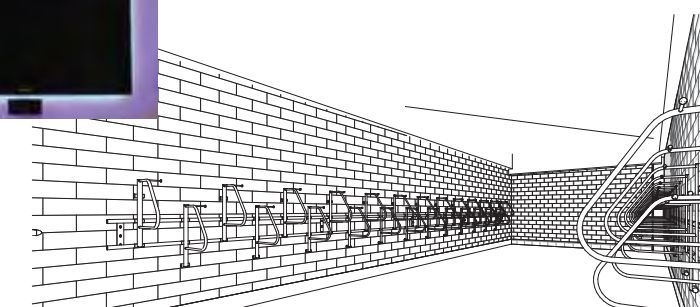
*painted murals on walls of Metro Detroit
Bike routes (stoney creek, heines park, dequindre cut,
farmington hills...)*

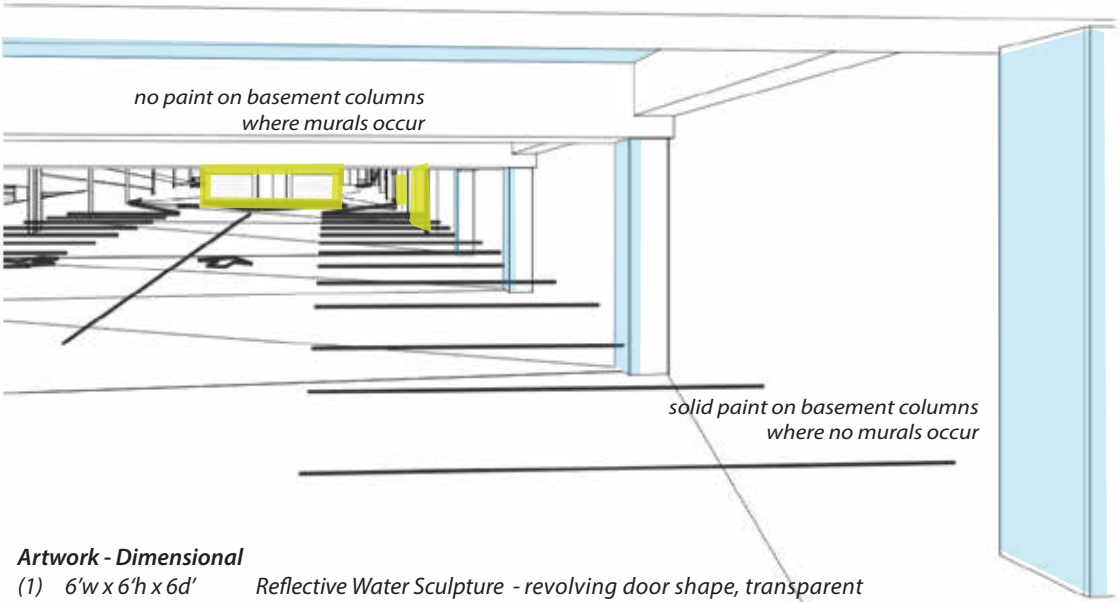
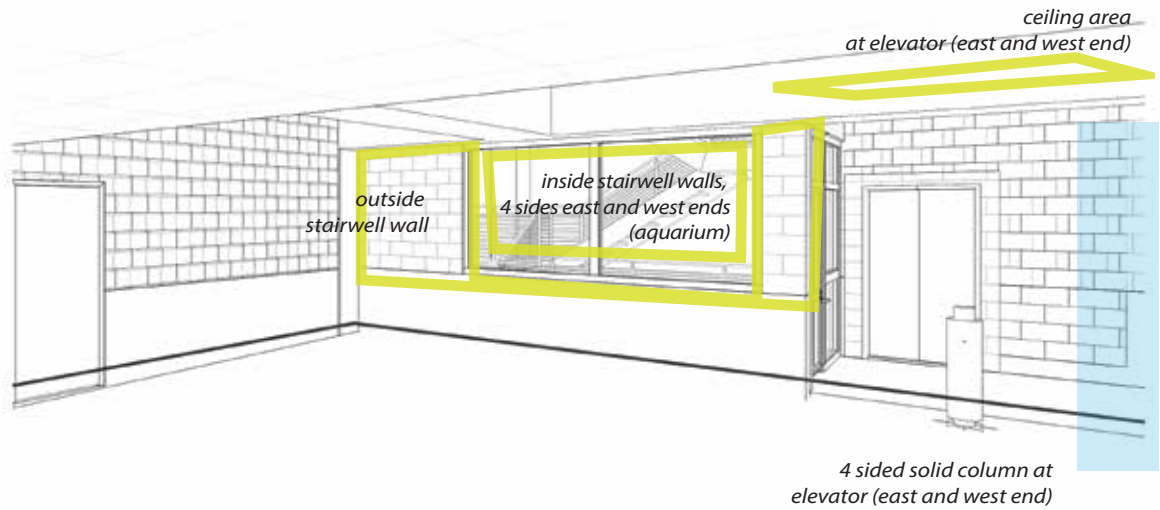
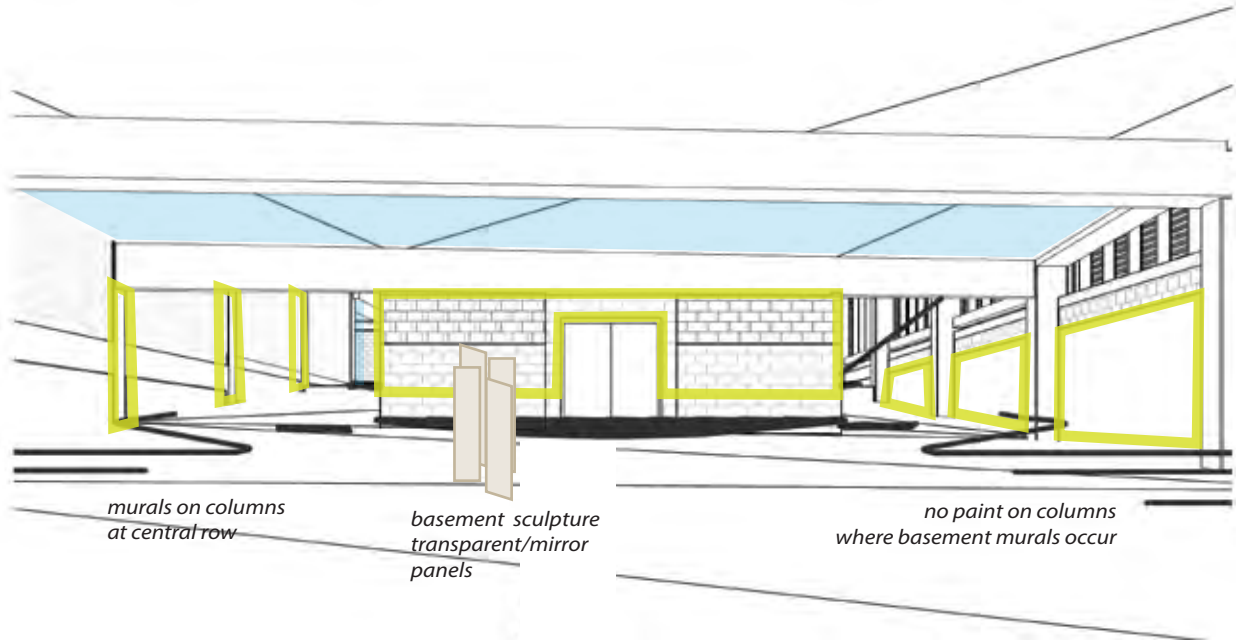
*ceiling painted black or white - install black lights
around perimeter of ceiling*

- *fluorescent paint used for trails and/or DOTs to indicate stops on bike trails each level has an active sculptural element*



Carl Oxley III
Artist - Ferndale





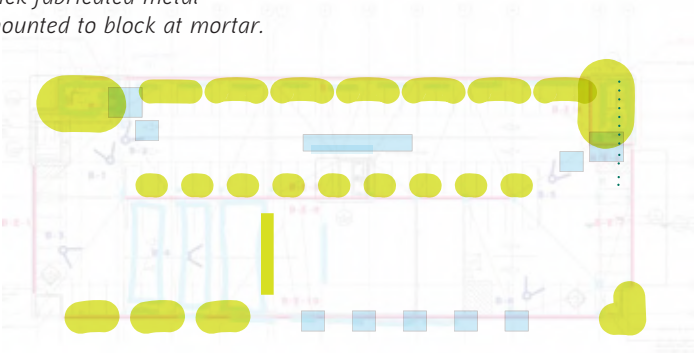
Artwork - Dimensional
(1) 6'w x 6'h x 6d' Reflective Water Sculpture - revolving door shape, transparent colored acrylic panels and 1 reflective mirror panel. Metal frame and base bolt to floor. Each panel approx. 6' x 3'.

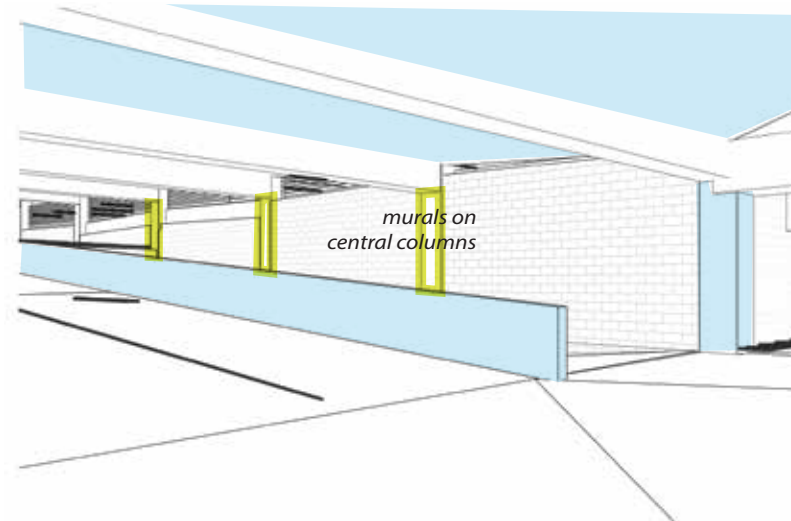
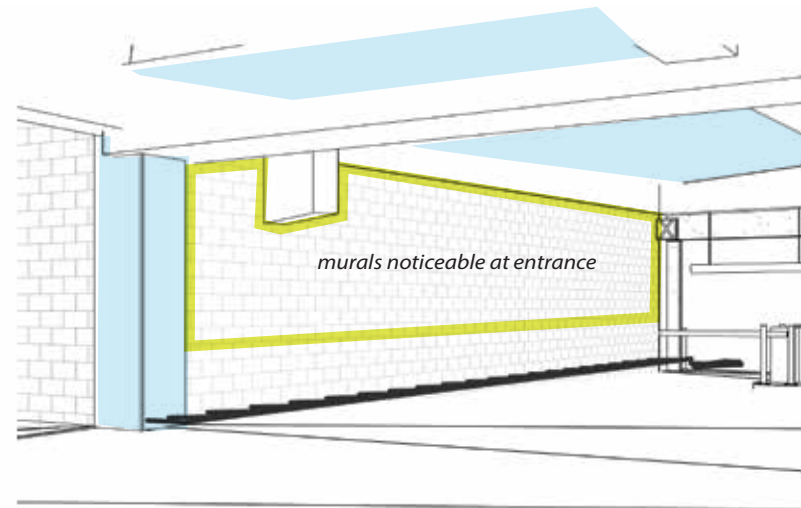
- Artwork - Mural**
- (3) South side wall sections at upward ramp going out
 - (14) Basement wall sections
 - (2) Inside all walls of both basement stairwells (aquarium)
 - (10) 3' X 6' Column murals (face and 3" wrap) central row
 - (2) 50" x 4" Elevator ceiling - Sign Painter lettering 12 words

- Commercial Paint (solid color)**
- (2) 8' x 8' Elevator ceiling
 - () Parking structure ceilings
 - (2) 3' X 6' Columns 4 sides (near stairwells)
 - (5) 3' X 6' Columns (face and 3" wrap) south/alley
 - (1) 15' x 4' Central row low wall facing north

Fabricated Letters
(2) 30"h x 1"d Letter B - one for each stairwell 1" thick fabricated metal letter painted custom color, stud mounted to block at mortar.

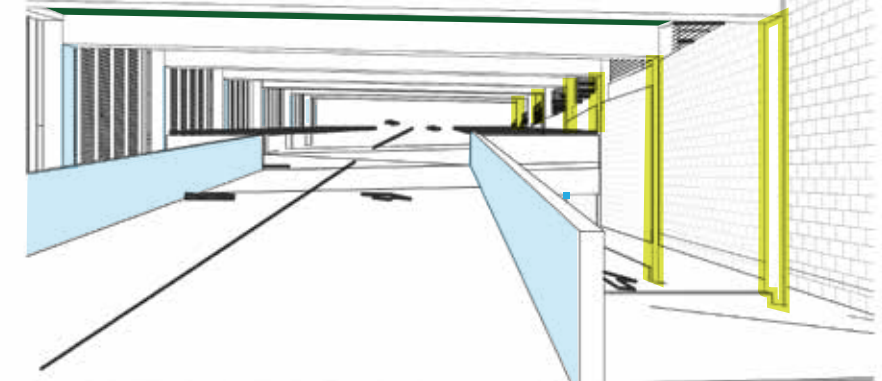
Floor Dots
(4) 18" x 18" MacTac permanent floor graphic printed 4 color





solid colors
on south columns

murals on
central columns



Artwork - Dimensional

- | | | |
|-----|------------------|--|
| (1) | 15' x 4' | Multi color tile wall section (exterior) |
| (5) | 15" diameter | |
| | 12"-20" high. | Seat sculpture (exterior) |
| (1) | 5'h x 1' w x 1'd | Tower sculpture (exterior) |
| (2) | 25" diameter | Terrazzo (semi-enclosed) |

Artwork - Mural

- | | | |
|-----|----------|--|
| (1) | 16' X 4' | East end short wall |
| (4) | | West end ground floor entrance: E 8-10 and south wall at alley |
| (9) | 3' X 6' | Column murals (face and 3" wrap) central row |
| (2) | 50" x 4" | Elevator ceiling - Sign Painter lettering 12 words |

Commercial Paint (solid color)

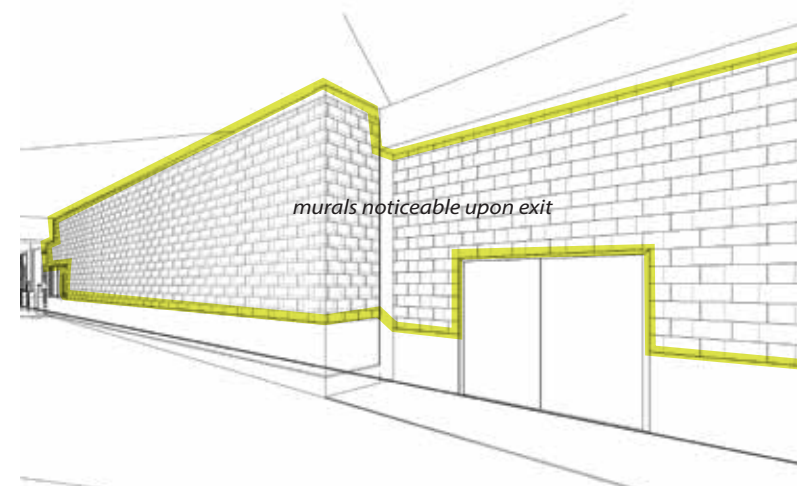
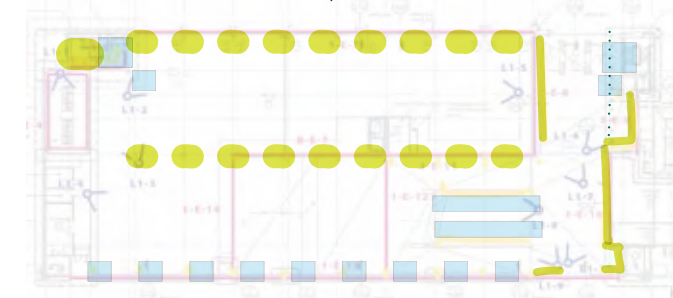
- | | | |
|------|---------|---|
| (2) | 8' x 8' | Elevator ceiling |
| () | | Parking structure ceilings |
| (2) | 3' X 6' | Columns 4 sides (near stairwells) |
| (10) | 3' X 6' | Columns (face and 3" wrap) south/alley |
| (2) | | Ramp walls (upward ramp side of walls only) |

Vinyl

- | | | |
|-----|----------|--|
| (1) | 5" x 40" | Bikehouse Lettering on transom window first surface exterior |
|-----|----------|--|

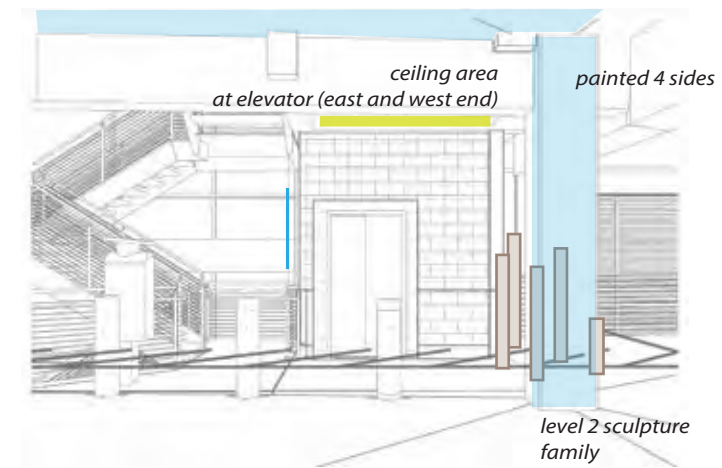
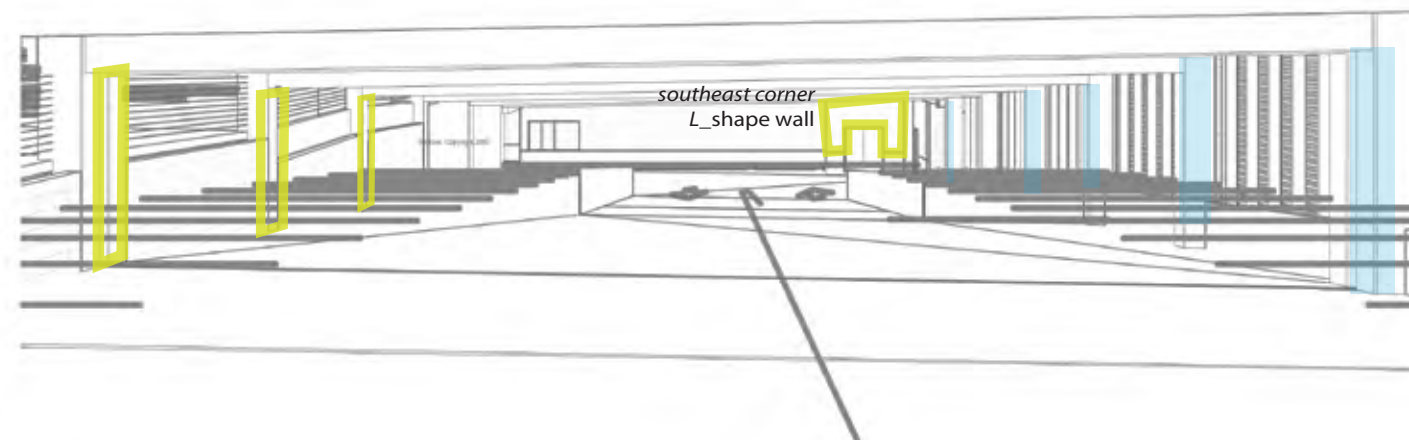
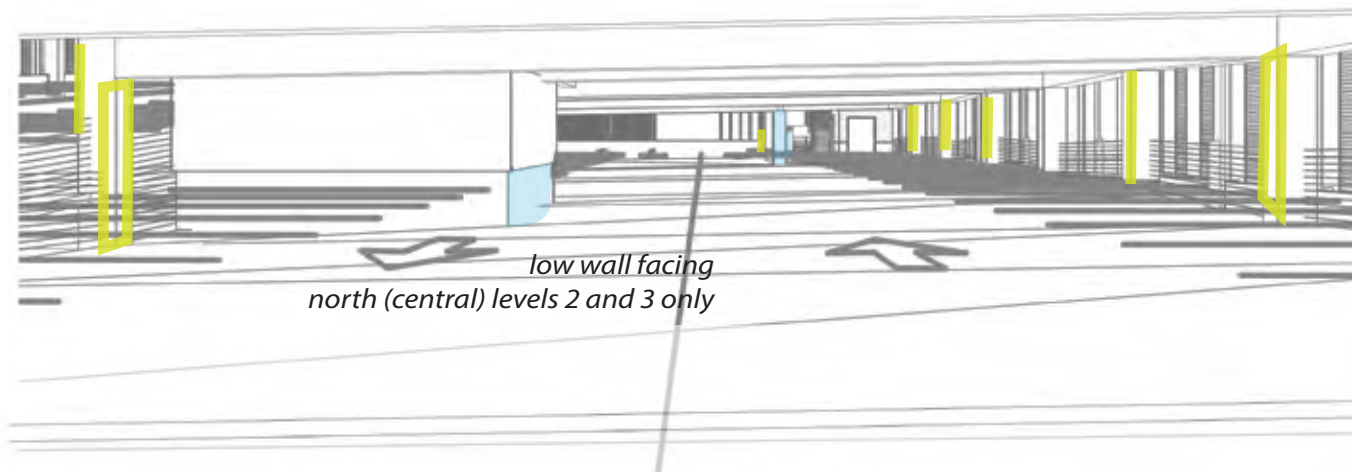
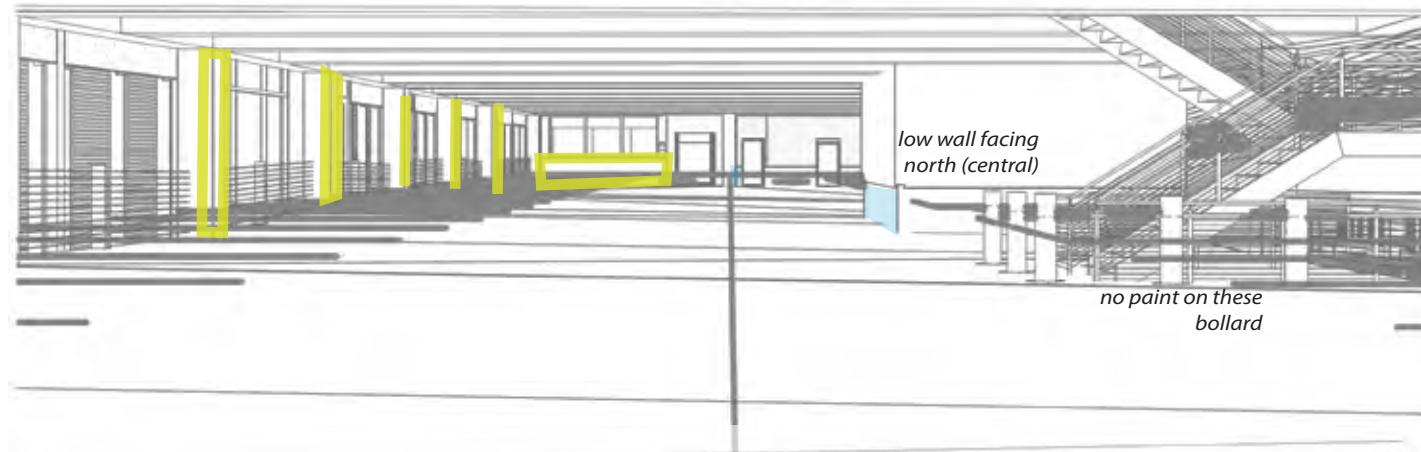
Fabricated Letters

- | | | |
|-----|------------|---|
| (2) | 30"h x 1"d | Number 1 - one for each stairwell 1" thick fabricated metal letter painted custom color, stud mounted to block at mortar. |
|-----|------------|---|



short wall at west entrance
inside stairwell

two sections of south wall flanking
vehicle opening to alley



Artwork - Dimensional

- (5) 5' x 5' x 5' Geometric Family Sculpture - 4" x 4" square tubes, vary in height 36 inches to 6 ft. with 1" openings for eyes, both sides (to see through from back of each tube). Powder coated one different color each

Artwork - Mural

- (2) 16' x 4' Walls near stairs, one side only
(22) 3' x 6' Column murals (face and 3" wrap) central row and north
(2) 50" x 4" Elevator ceiling and between steps - Sign Painter lettering 16 words
(2) 7' x 9' Southeast Corner walls

Commercial Paint (solid color)

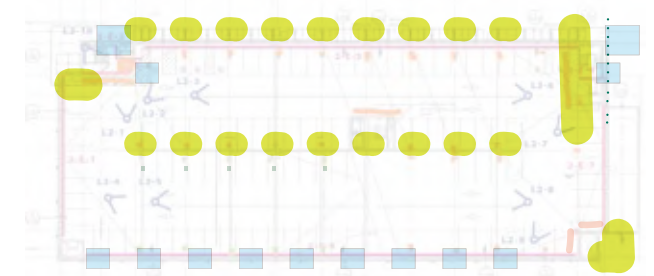
- (2) 8' x 8' Elevator ceiling
() Parking structure ceilings
(2) 16' x 4' Short wall 1 side (near stairwell)
(2) 3' x 6' Columns 4 sides (near stairwells)
(5) 3' x 6' Columns (face and 3" wrap) south/alley
(1) 16' X 4' Low wall facing north (central)

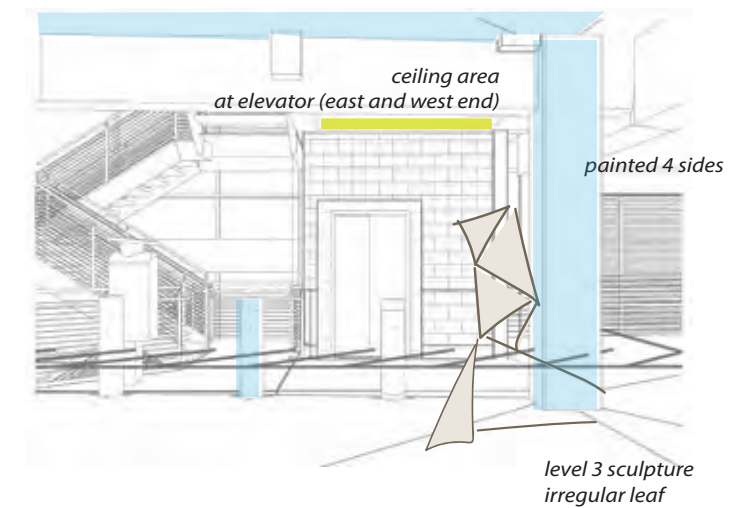
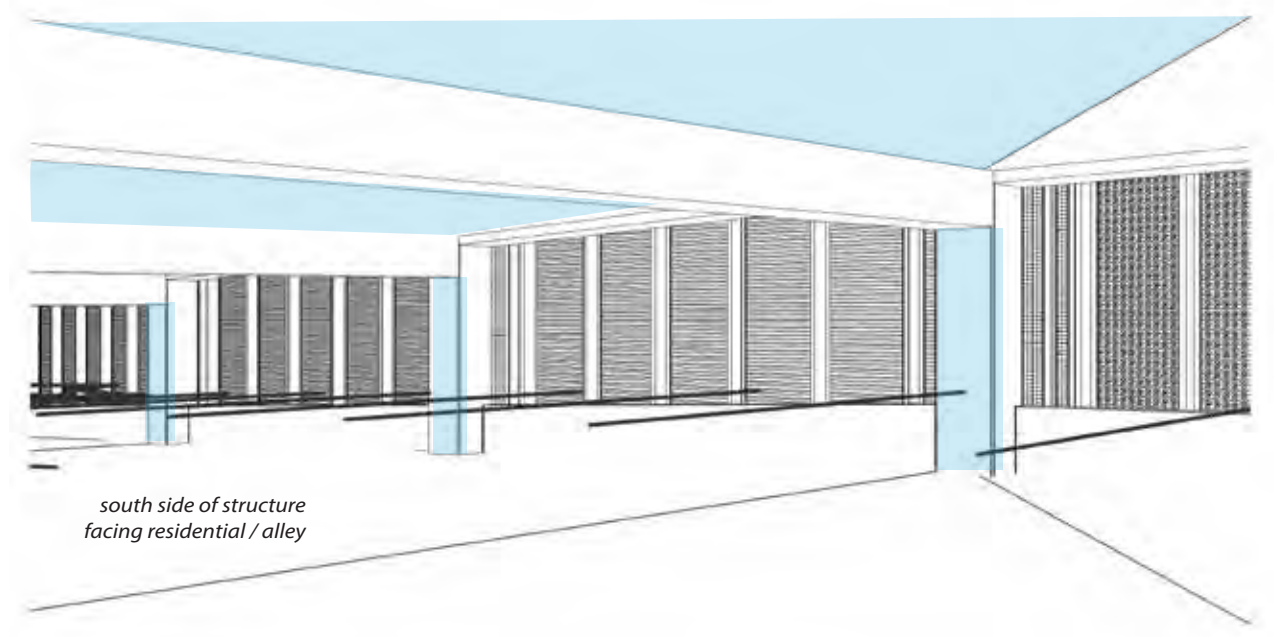
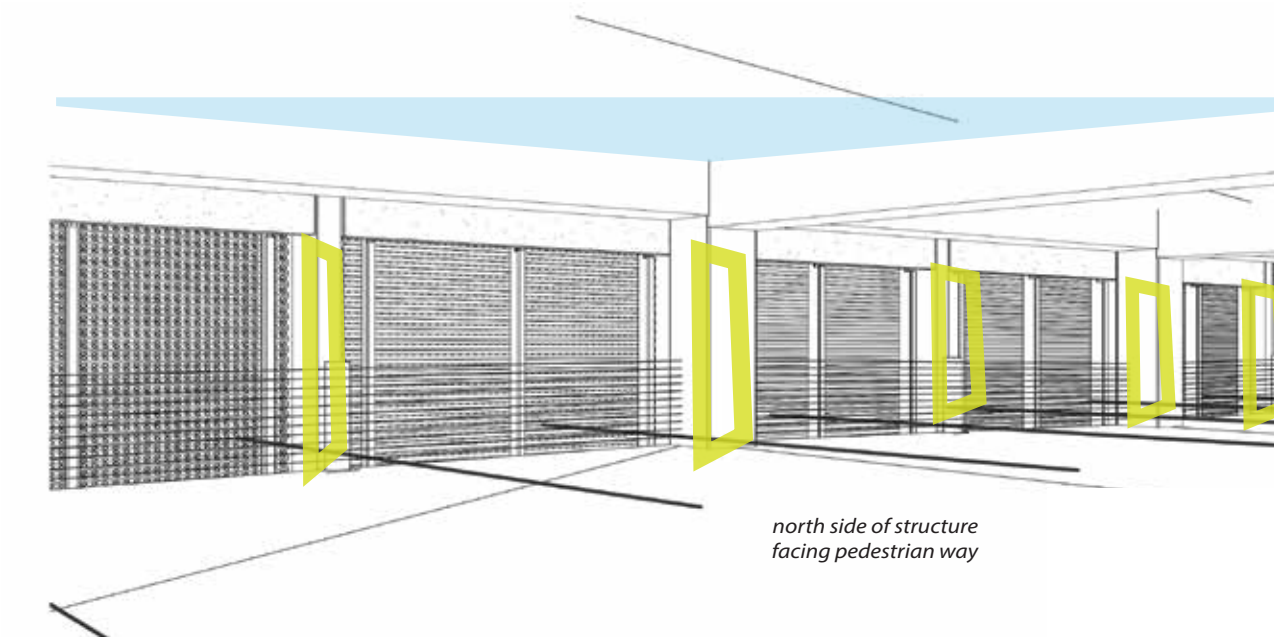
Fabricated Letters

- ((2) 30"h x 1"d Number 2 - one for each stairwell 1" thick fabricated metal letter painted custom color, stud mounted to block at mortar.

Floor Dots

- (1) 18" x 18" MacTac permanent floor graphic printed 4 color





Artwork - Dimensional

- (1) 5" x 5" x 5" *Folded Leaf Sculpture* - Irregular shape with 2 or 3 reflective surfaces. Metal structure with painted metal panels applied. Can be built in sections assembled on site.

Artwork - Mural

- (2) 16' x 4' Walls near stairs east and west end, one side only
(22) 3' x 6' Column murals (face and 3" wrap) central row and north
(2) 50" x 4" Elevator ceiling and between steps - Sign Painter lettering 16 words
(2) 7' x 9' Southeast Corner walls

Commercial Paint (solid color)

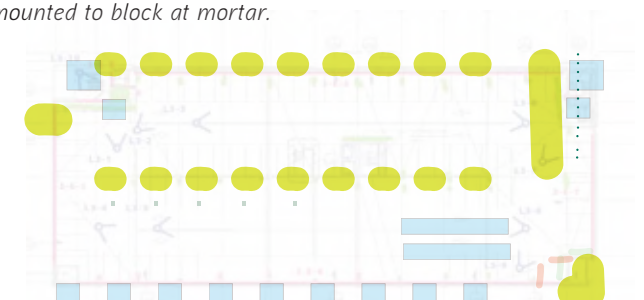
- (2) 8' x 8' Elevator ceiling
() Parking structure ceilings
(2) 3' x 6' Columns 4 sides (near stairwells)
(5) 3' x 6' Columns (face and 3" wrap) south/alley
(1) 16' X 4' Low wall facing north (central)

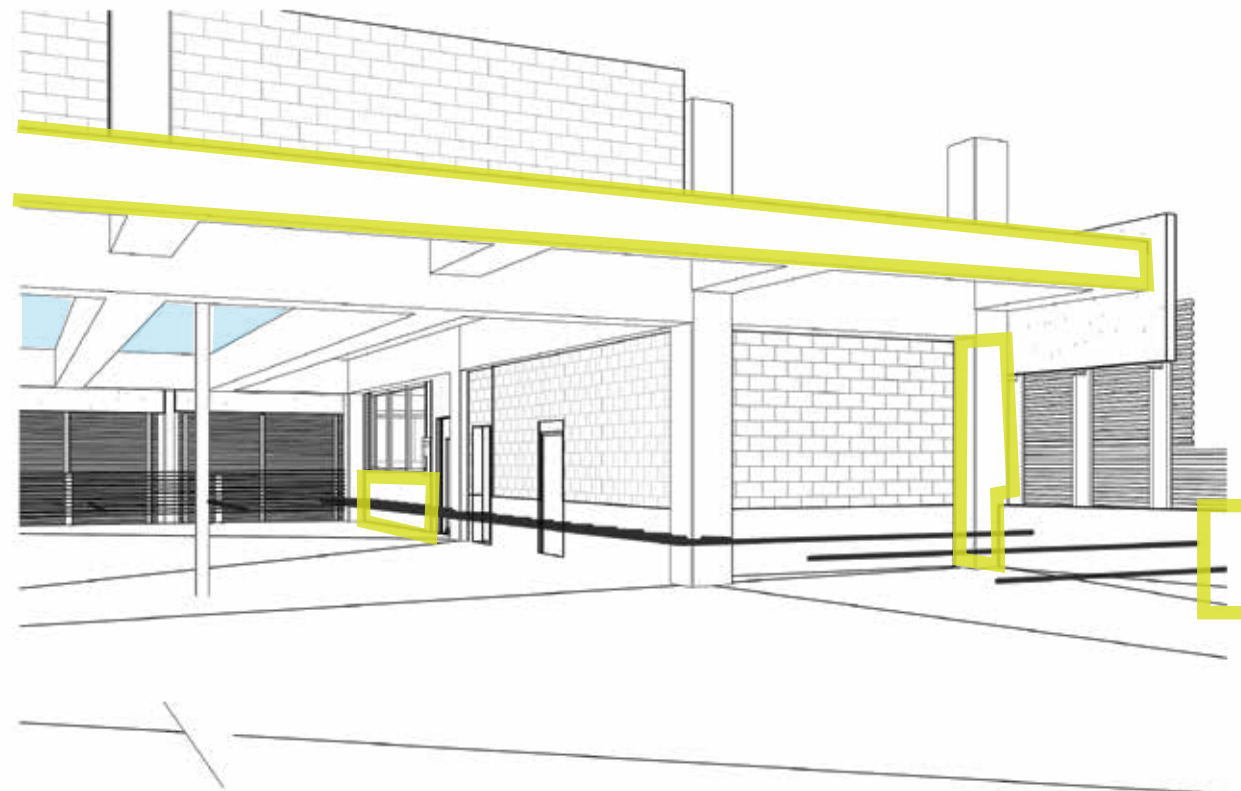
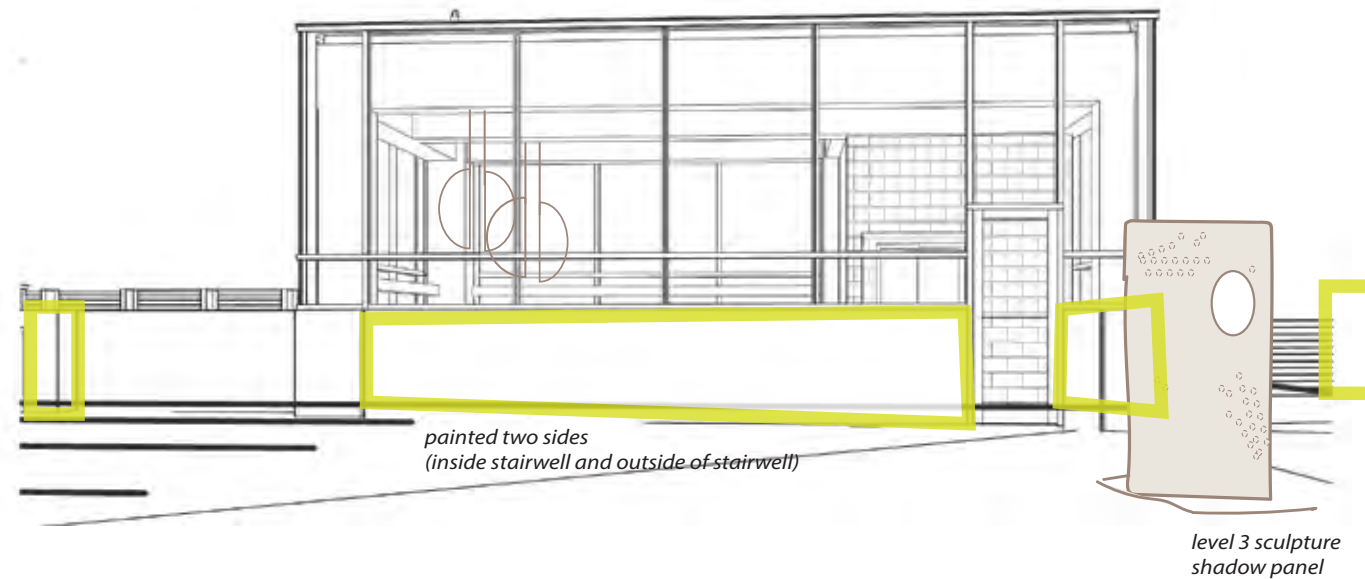
Fabricated Letters

- (2) 30" h x 1" d Number 3 - one for each stairwell 1" thick fabricated metal letter painted custom color, stud mounted to block at mortar.

Floor Dots

- (1) 18" x 18" MacTac permanent floor graphic printed 4 color





Artwork - Dimensional

- (1) *Cloud Shadow Sculpture - standing metal shadow panel*
- (1) *The dot Fiber Mobile - hanging felt forms*

Artwork - Mural

- (1) *Face (edge) of concrete "awning" above cars*
- (17) 3' x 6' *Column murals (face and 3" wrap) central row and north*
- (2) 50" x 4" *Elevator ceiling and between steps - Sign Painter lettering 16 words*
- (2) 5' x 9' *Southeast Corner walls*
- (2) 35' x 4' *Short walls at west stairwell, wrap around corner, two sides*

Commercial Paint (solid color)

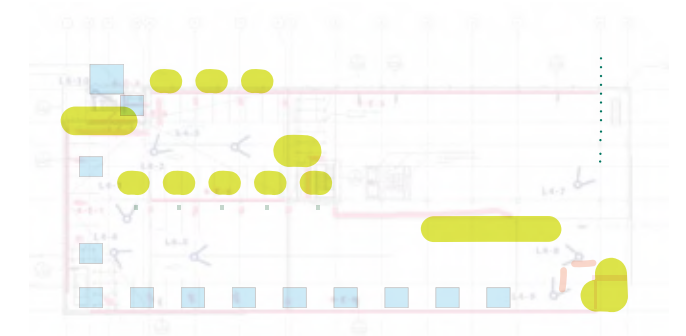
- (2) 8' x 8' *Elevator ceiling*
- () *Roof - inside ceiling of stairwell tower*
- (1) 3' x 6' *Columns 4 sides (near stairwells)*
- (11) 3' x 6' *Columns (face and 3" wrap) south/alley*
- (2) 20' X 4' *L-shape central and southeast corner*

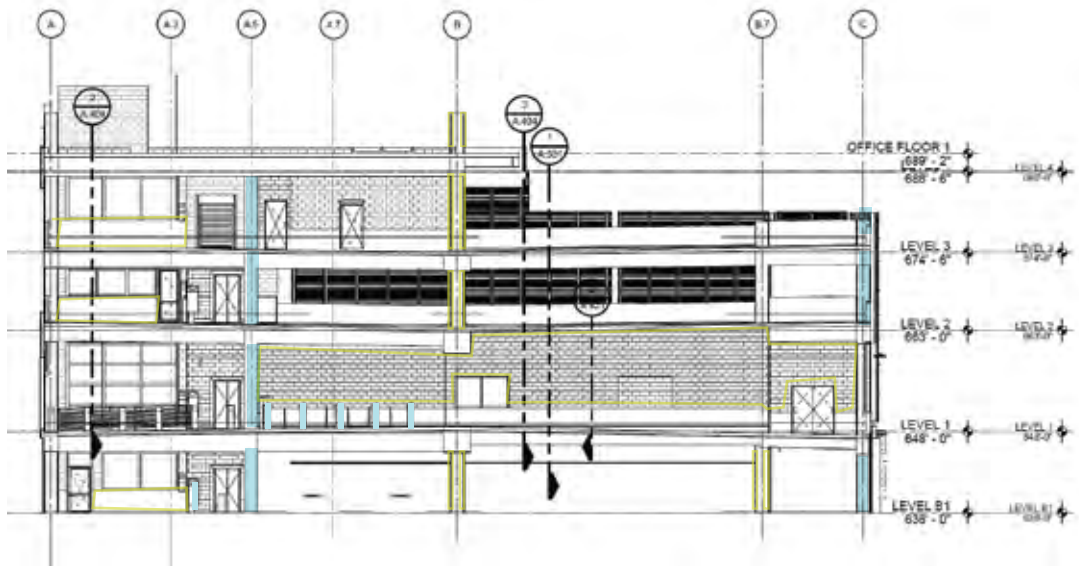
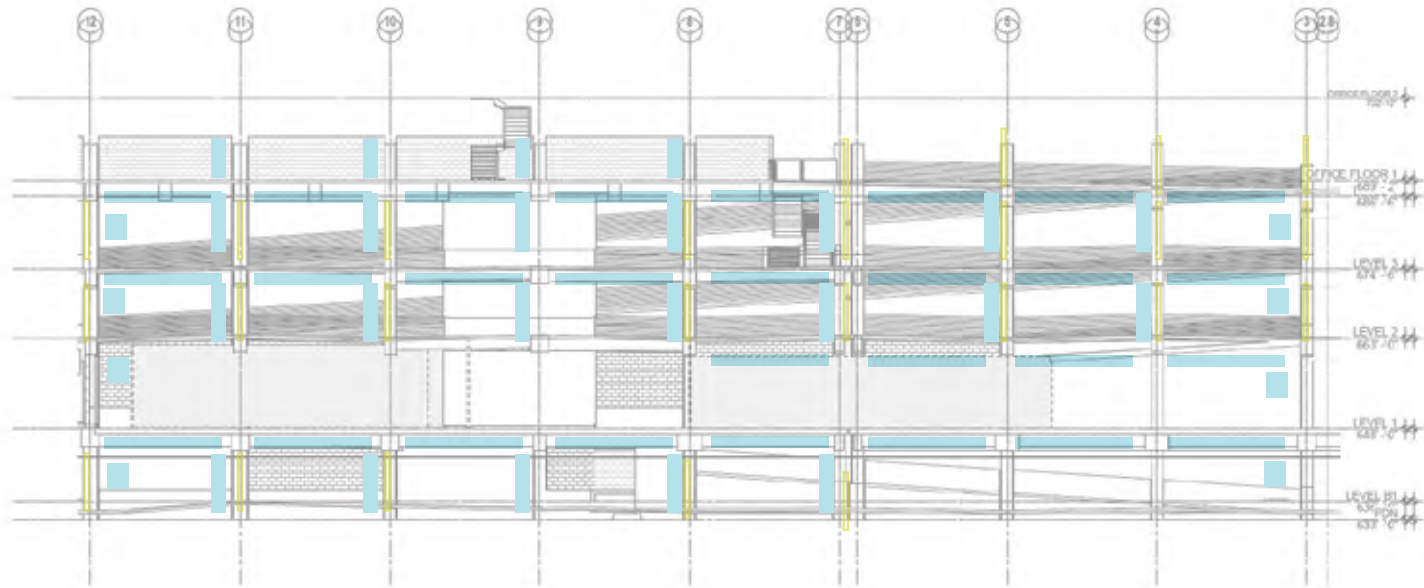
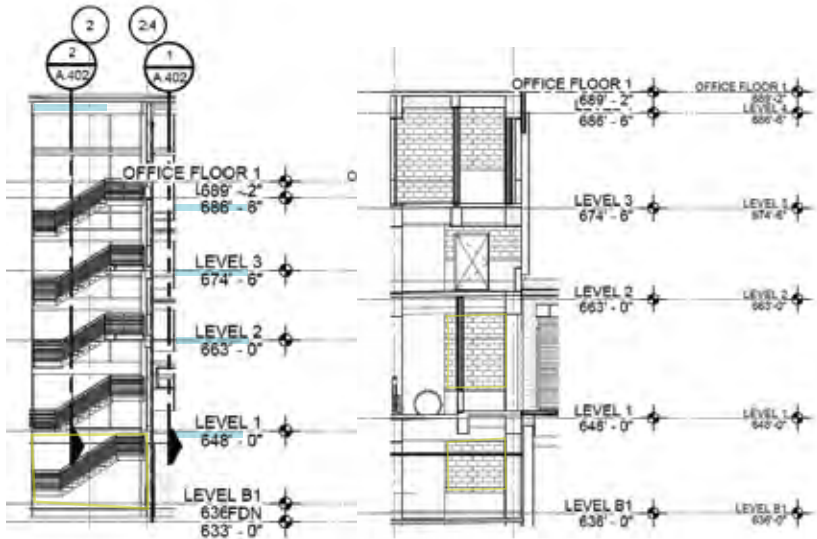
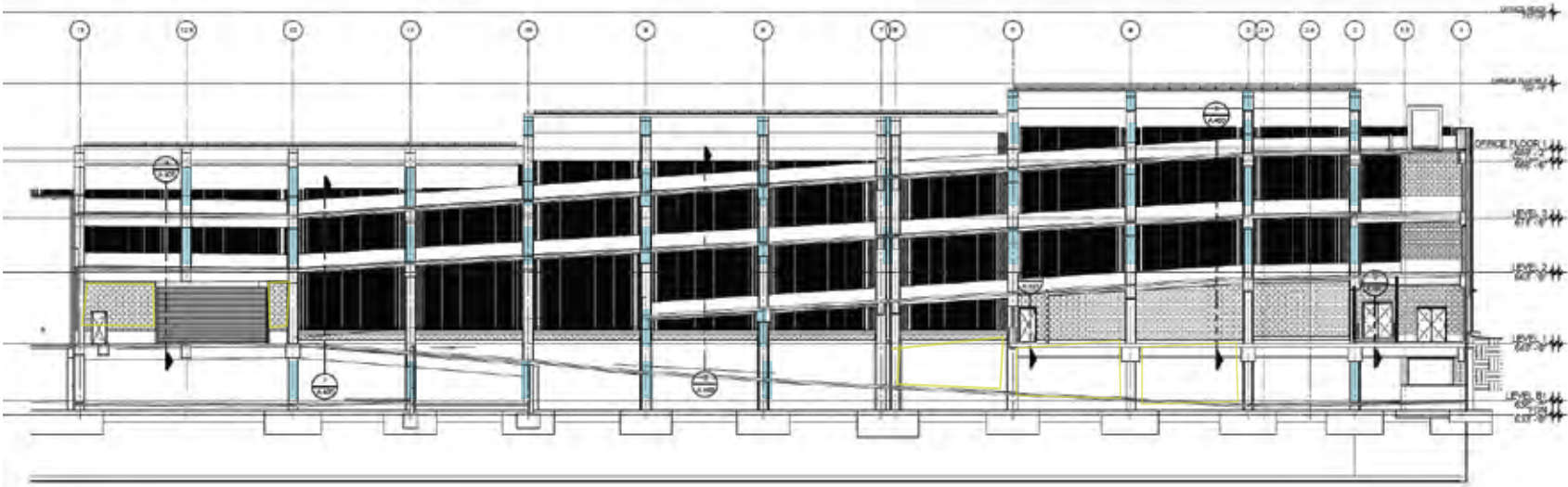
Fabricated Letters

- (2) 30"h x 1"d *Number 4 - one for each stairwell 1" thick fabricated metal letter painted custom color, stud mounted to block at mortar.*

Floor Dots

- (3) 18" x 18" *MacTac permanent floor graphic printed 4 color*







Home / Receptacles / 32 Gal. Personalized Diamond Trash/Recycling Bins With Doors

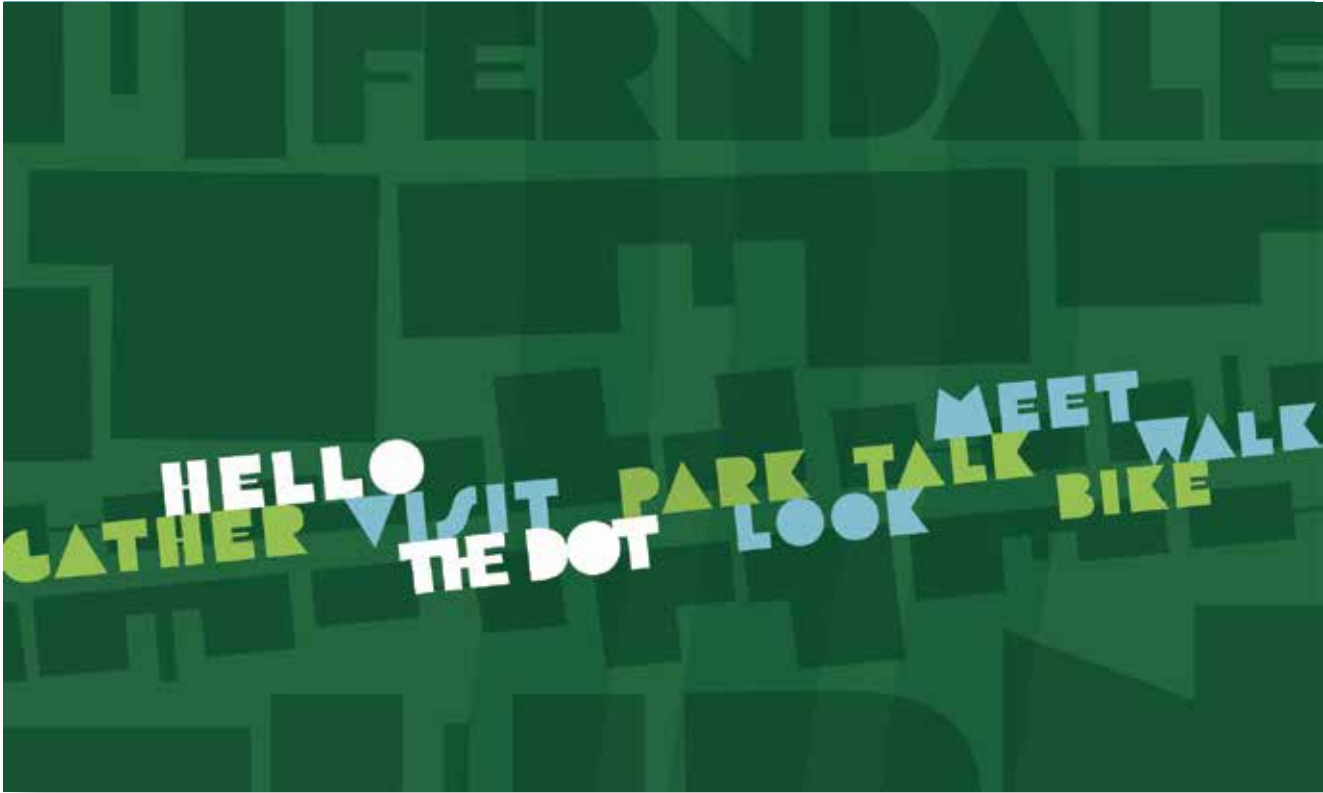
Trash Bins
recycling stations throughout.



Privacy
*alley trellis, incorporate weaving
on upper area until foliage grows in.*

*fiber could be uniform, systematic
neutral and tidy or colorful*

adds warmth to the exterior.



Temporary printed banner. Visible from residential street. Public art not advertising.

Opportunity to be proud of Ferndale and assure residents the development will respond to residents and visitors.

This design can be produced in either size.



Temporary printed banner. Visible from residential street. Public art not advertising.

Opportunity to be proud of Ferndale and assure residents the development will respond to residents and visitors.

This design can be produced in either size.